



INTERNATIONAL GEMOLOGICAL INSTITUTE

ELECTRONIC COPY

LABORATORY GROWN DIAMOND REPORT

LG536295455

IGI LABORATORY GROWN DIAMOND ID REPORT

July 18, 2022

IGI Report Number **LG536295455**

OVAL BRILLIANT

6.15 X 4.54 X 2.93 MM

Carat Weight	0.52 CARAT
Color Grade	FANCY INTENSE PINK
Clarity Grade	VS 2
Polish	EXCELLENT
Symmetry	VERY GOOD
Fluorescence	SLIGHT
Inscription(s)	LABGROWN IGI LG536295455

Comments: This Laboratory Grown Diamond was created by Chemical Vapor Deposition (CVD) growth process. Indications of post-growth treatment.

LABORATORY GROWN DIAMOND REPORT

IGI LABORATORY GROWN DIAMOND IDENTIFICATION REPORT

July 18, 2022

IGI Report Number **LG536295455**

Description **LABORATORY GROWN DIAMOND**

Shape and Cutting Style **OVAL BRILLIANT**

Measurements **6.15 X 4.54 X 2.93 MM**

GRADING RESULTS

Carat Weight **0.52 CARAT**

Color Grade **FANCY INTENSE PINK**

Clarity Grade **VS 2**

ADDITIONAL GRADING INFORMATION

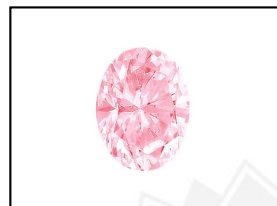
Polish **EXCELLENT**

Symmetry **VERY GOOD**

Fluorescence **SLIGHT**

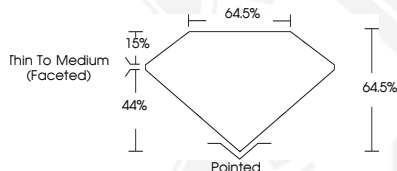
Inscription(s) **LABGROWN IGI LG536295455**

Comments: This Laboratory Grown Diamond was created by Chemical Vapor Deposition (CVD) growth process. Indications of post-growth treatment.



LABGROWN IGI LG536295455

LASERSCRIBESM
Sample Images Used



IGI LABORATORY GROWN DIAMOND ID REPORT

July 18, 2022

IGI Report Number **LG536295455**

OVAL BRILLIANT

6.15 X 4.54 X 2.93 MM

Carat Weight	0.52 CARAT
Color Grade	FANCY INTENSE PINK
Clarity Grade	VS 2
Polish	EXCELLENT
Symmetry	VERY GOOD
Fluorescence	SLIGHT
Inscription(s)	LABGROWN IGI LG536295455

Comments: This Laboratory Grown Diamond was created by Chemical Vapor Deposition (CVD) growth process. Indications of post-growth treatment.



THIS DOCUMENT WAS PRODUCED WITH THE FOLLOWING SECURITY MEASURES: SPECIAL DOCUMENT PAPER, INK SCREENS, WATERMARK, BACKGROUND DESIGN, HOLOGRAM AND OTHER SECURITY FEATURES NOT LISTED AND DO EXCEED DOCUMENT SECURITY INDUSTRY GUIDELINES.

For terms & conditions and to verify this report, please visit www.igi.org