



ELECTRONIC COPY

LABORATORY GROWN DIAMOND REPORT

July 4, 2022
IGI Report Number LG536293293
Description LABORATORY GROWN DIAMOND
Shape and Cutting Style CUT CORNERED RECTANGULAR MODIFIED BRILLIANT
Measurements 7.27 X 5.19 X 3.89 MM

GRADING RESULTS

Carat Weight 1.23 CARAT
Color Grade E
Clarity Grade VS 2

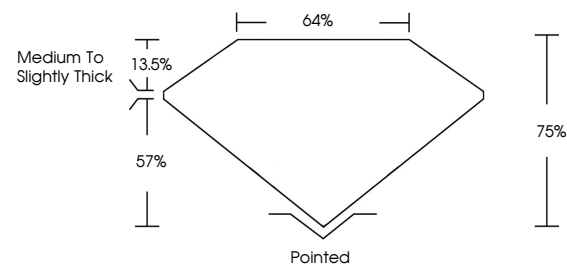
ADDITIONAL GRADING INFORMATION

Polish EXCELLENT
Symmetry EXCELLENT
Fluorescence NONE
Inscription(s) LABGROWN IGI LG536293293

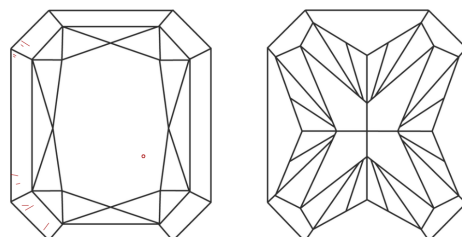
Comments: As Grown - No indication of post-growth treatment. This Laboratory Grown Diamond was created by High Pressure High Temperature (HPHT) growth process. Type II

LG536293293

PROPORTIONS



CLARITY CHARACTERISTICS



KEY TO SYMBOLS

Red symbols indicate internal characteristics. Green symbols indicate external characteristics.

LABORATORY GROWN DIAMOND REPORT

GRADING SCALES

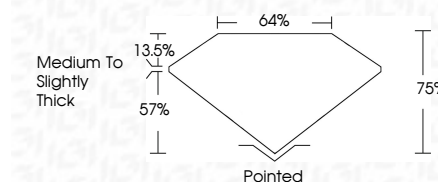
Table showing color grading scales (CL, NC, FT, VLT, LT) and clarity (10x) grading scales (FL, IF, VVS, VS, SI, I).

LABORATORY GROWN DIAMOND REPORT

July 4, 2022
IGI Report Number LG536293293
Description LABORATORY GROWN DIAMOND
Shape and Cutting Style CUT CORNERED RECTANGULAR MODIFIED BRILLIANT
Measurements 7.27 X 5.19 X 3.89 MM

GRADING RESULTS

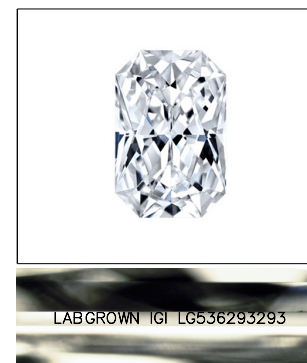
Carat Weight 1.23 CARAT
Color Grade E
Clarity Grade VS 2



ADDITIONAL GRADING INFORMATION

Polish EXCELLENT
Symmetry EXCELLENT
Fluorescence NONE
Inscription(s) LABGROWN IGI LG536293293

Comments: As Grown - No indication of post-growth treatment. This Laboratory Grown Diamond was created by High Pressure High Temperature (HPHT) growth process. Type II



LASERSCRIBE SM Sample Image Used



Summary of report details including date, report number, description, measurements, grading results, and additional information.

As Grown - No indication of post-growth treatment. This Laboratory Grown Diamond was created by High Pressure High Temperature (HPHT) growth process. Type II