



**INTERNATIONAL
GEMOLOGICAL
INSTITUTE**

ELECTRONIC COPY

**LABORATORY GROWN
DIAMOND REPORT**

**IGI LABORATORY GROWN
DIAMOND ID REPORT**

July 4, 2022
IGI Report Number **LG536274927**

LABORATORY GROWN DIAMOND REPORT

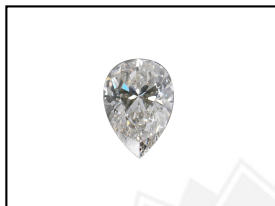
LG536274927

IGI LABORATORY GROWN DIAMOND IDENTIFICATION REPORT

July 4, 2022
IGI Report Number **LG536274927**
Description **LABORATORY GROWN DIAMOND**
Shape and Cutting Style **PEAR BRILLIANT**
Measurements **7.70 X 4.85 X 3.13 MM**

PEAR BRILLIANT
7.70 X 4.85 X 3.13 MM
Carat Weight **0.68 CARAT**
Color Grade **F**
Clarity Grade **SI 1**
Polish **VERY GOOD**
Symmetry **VERY GOOD**
Fluorescence **NONE**
Inscription(s) **LABGROWN IGI
LG536274927**

Comments: This Laboratory Grown Diamond was created by Chemical Vapor Deposition (CVD) growth process and may include post-growth treatment. Type Ila



GRADING RESULTS

Carat Weight **0.68 CARAT**
Color Grade **F**
Clarity Grade **SI 1**

LASERSCRIBESM
Sample Images Used



ADDITIONAL GRADING INFORMATION

Polish **VERY GOOD**
Symmetry **VERY GOOD**
Fluorescence **NONE**
Inscription(s) **LABGROWN IGI LG536274927**

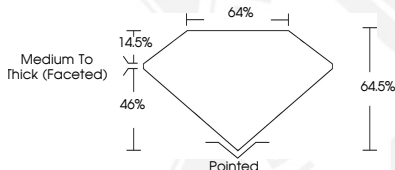
**IGI LABORATORY GROWN
DIAMOND ID REPORT**

July 4, 2022
IGI Report Number **LG536274927**

PEAR BRILLIANT
7.70 X 4.85 X 3.13 MM
Carat Weight **0.68 CARAT**
Color Grade **F**
Clarity Grade **SI 1**
Polish **VERY GOOD**
Symmetry **VERY GOOD**
Fluorescence **NONE**
Inscription(s) **LABGROWN IGI
LG536274927**

Comments: This Laboratory Grown Diamond was created by Chemical Vapor Deposition (CVD) growth process and may include post-growth treatment. Type Ila

Comments: This Laboratory Grown Diamond was created by Chemical Vapor Deposition (CVD) growth process and may include post-growth treatment. Type Ila



THIS DOCUMENT WAS PRODUCED WITH THE FOLLOWING SECURITY MEASURES: SPECIAL DOCUMENT PAPER, INK SCREENS, WATERMARK, BACKGROUND DESIGN, HOLOGRAM AND OTHER SECURITY FEATURES NOT LISTED AND DO EXCEED DOCUMENT SECURITY INDUSTRY GUIDELINES.

For terms & conditions and to verify this report, please visit www.igi.org