

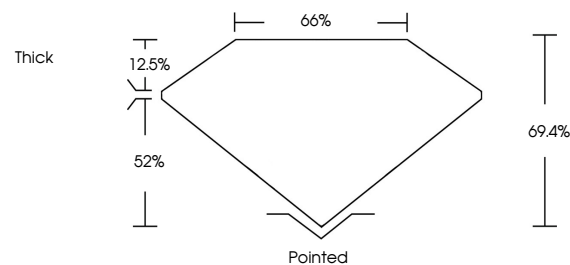


ELECTRONIC COPY

LABORATORY GROWN DIAMOND REPORT

LG536203149

PROPORTIONS



GRADING SCALES

COLOR GRADING SCALE	CL	NC	FT	VLT	LT	
	COLORLESS D-F	NEAR COLORLESS G-J	FAINT K-M	VERY LIGHT N-R	LIGHT S-Z	
CLARITY (10x) GRADING SCALE	FL	IF	VVS	VS	SI	I
	FLAWLESS INTERNALLY FLAWLESS	VERY VERY SLIGHTLY INCLUDED	VERY SLIGHTLY INCLUDED	SLIGHTLY INCLUDED	INCLUDED	

July 12, 2022

IGI Report Number

LG536203149

Description

LABORATORY GROWN DIAMOND

Shape and Cutting Style

CUT CORNERED RECTANGULAR MODIFIED BRILLIANT

Measurements

8.00 X 5.88 X 4.08 MM

GRADING RESULTS

Carat Weight

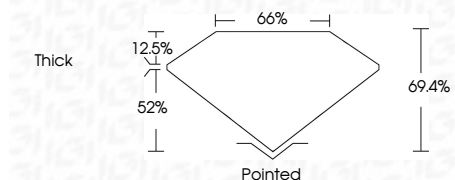
1.77 CARAT

Color Grade

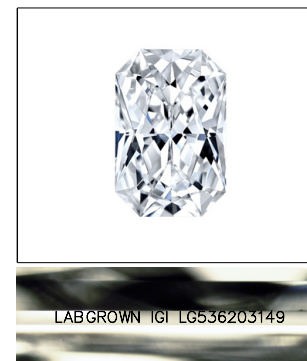
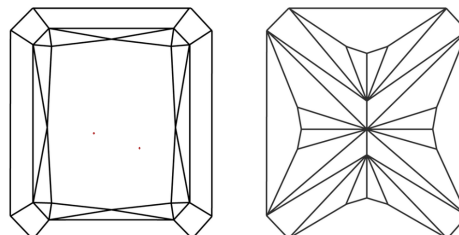
G

Clarity Grade

VS 1



CLARITY CHARACTERISTICS



LABGROWN IGI LG536203149

LASERSCRIBE SM

Sample Image Used

KEY TO SYMBOLS

Red symbols indicate internal characteristics. Green symbols indicate external characteristics.

ADDITIONAL GRADING INFORMATION

Polish

EXCELLENT

Symmetry

EXCELLENT

Fluorescence

NONE

Inscription(s)

LABGROWN IGI LG536203149

Comments: This Laboratory Grown Diamond was created by Chemical Vapor Deposition (CVD) growth process and may include post-growth treatment. Type IIa

July 12, 2022

IGI Report Number

LG536203149

Description

LABORATORY GROWN DIAMOND

Shape and Cutting Style

CUT CORNERED RECTANGULAR MODIFIED BRILLIANT

Measurements

8.00 X 5.88 X 4.08 MM

GRADING RESULTS

Carat Weight

1.77 CARAT

Color Grade

G

Clarity Grade

VS 1

ADDITIONAL GRADING INFORMATION

Polish

EXCELLENT

Symmetry

EXCELLENT

Fluorescence

NONE

Inscription(s)

LABGROWN IGI LG536203149

Comments: This Laboratory Grown Diamond was created by Chemical Vapor Deposition (CVD) growth process and may include post-growth treatment. Type IIa

July 12, 2022  
IGI Report No LG536203149  
CUT CORNERED RECT. MODIFIED  
8.00 X 5.88 X 4.08 MM

Carat Weight	1.77 CARAT
Color Grade	G
Clarity Grade	VS 1
Depth	69.4%
Table	66%
Grade	Thick
Culet	Pointed
Polish	EXCELLENT
Symmetry	EXCELLENT
Fluorescence	NONE
Inscription(s)	LABGROWN IGI LG536203149
Comments:	

The Laboratory Grown Diamond was created by Chemical Vapor Deposition (CVD) growth process and may include post-growth treatment. Type IIa

