



**INTERNATIONAL  
GEMOLOGICAL  
INSTITUTE**

**ELECTRONIC COPY**

**LABORATORY GROWN  
DIAMOND REPORT**

**IGI LABORATORY GROWN  
DIAMOND ID REPORT**

July 14, 2022  
IGI Report Number **LG536200430**  
**ROUND BRILLIANT**  
**5.11 - 5.17 X 3.10 MM**  
Carat Weight 0.50 CARAT  
Color Grade FANCY INTENSE PINK  
Clarity Grade VS 1  
Cut Grade EXCELLENT  
Polish EXCELLENT  
Symmetry VERY GOOD  
Fluorescence SLIGHT  
Inscription(s) LABGROWN IGI  
LG536200430

Comments: This Laboratory Grown Diamond was created by Chemical Vapor Deposition (CVD) growth process. Indications of post-growth treatment.

**LABORATORY GROWN DIAMOND REPORT**

**IGI LABORATORY GROWN DIAMOND IDENTIFICATION REPORT**

July 14, 2022  
IGI Report Number LG536200430  
Description LABORATORY GROWN DIAMOND  
Shape and Cutting Style ROUND BRILLIANT  
Measurements 5.11 - 5.17 X 3.10 MM

**GRADING RESULTS**

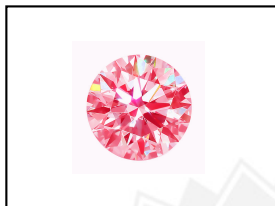
Carat Weight 0.50 CARAT  
Color Grade FANCY INTENSE PINK  
Clarity Grade VS 1  
Cut Grade EXCELLENT

**ADDITIONAL GRADING INFORMATION**

Polish EXCELLENT  
Symmetry VERY GOOD  
Fluorescence SLIGHT  
Inscription(s) LABGROWN IGI LG536200430

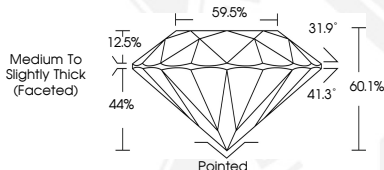
Comments: This Laboratory Grown Diamond was created by Chemical Vapor Deposition (CVD) growth process. Indications of post-growth treatment.

**LG536200430**



LABGROWN IGI LG536200430

**LASERSCRIBE<sup>SM</sup>**  
Sample Images Used



**IGI LABORATORY GROWN  
DIAMOND ID REPORT**

July 14, 2022  
IGI Report Number **LG536200430**  
**ROUND BRILLIANT**  
**5.11 - 5.17 X 3.10 MM**  
Carat Weight 0.50 CARAT  
Color Grade FANCY INTENSE PINK  
Clarity Grade VS 1  
Cut Grade EXCELLENT  
Polish EXCELLENT  
Symmetry VERY GOOD  
Fluorescence SLIGHT  
Inscription(s) LABGROWN IGI  
LG536200430

Comments: This Laboratory Grown Diamond was created by Chemical Vapor Deposition (CVD) growth process. Indications of post-growth treatment.

THIS DOCUMENT WAS PRODUCED WITH THE FOLLOWING SECURITY MEASURES: SPECIAL DOCUMENT PAPER, INK SCREENS, WATERMARK, BACKGROUND DESIGN, HOLOGRAM AND OTHER SECURITY FEATURES NOT LISTED AND DO EXCEED DOCUMENT SECURITY INDUSTRY GUIDELINES.

For terms & conditions and to verify this report, please visit [www.igi.org](http://www.igi.org)