



**INTERNATIONAL
GEMOLOGICAL
INSTITUTE**

LABORATORY GROWN DIAMOND REPORT

IGI LABORATORY GROWN DIAMOND IDENTIFICATION REPORT

August 3, 2022
 IGI Report Number LG534245483
 Description LABORATORY GROWN DIAMOND
 Shape and Cutting Style ROUND BRILLIANT
 Measurements 5.17 - 5.22 X 3.09 MM

GRADING RESULTS

Carat Weight 0.50 CARAT
 Color Grade FANCY INTENSE PINK
 Clarity Grade VS 2
 Cut Grade EXCELLENT

ADDITIONAL GRADING INFORMATION

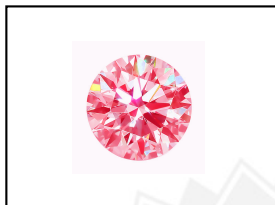
Polish VERY GOOD
 Symmetry VERY GOOD
 Fluorescence SLIGHT
 Inscription(s) LABGROWN IGI LG534245483

Comments: This Laboratory Grown Diamond was created by Chemical Vapor Deposition (CVD) growth process. Indications of post-growth treatment.

ELECTRONIC COPY

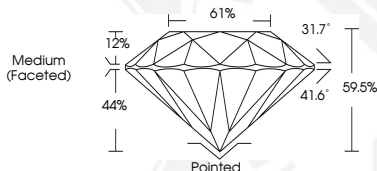
**LABORATORY GROWN
DIAMOND REPORT**

LG534245483



LABGROWN IGI LG534245483

LASERSCRIBESM
Sample Images Used



**IGI LABORATORY GROWN
DIAMOND ID REPORT**

August 3, 2022
 IGI Report Number **LG534245483**
ROUND BRILLIANT
5.17 - 5.22 X 3.09 MM
 Carat Weight 0.50 CARAT
 Color Grade FANCY INTENSE PINK
 Clarity Grade VS 2
 Cut Grade EXCELLENT
 Polish VERY GOOD
 Symmetry VERY GOOD
 Fluorescence SLIGHT
 Inscription(s) LABGROWN IGI
 LG534245483

Comments: This Laboratory Grown Diamond was created by Chemical Vapor Deposition (CVD) growth process. Indications of post-growth treatment.

**IGI LABORATORY GROWN
DIAMOND ID REPORT**

August 3, 2022
 IGI Report Number **LG534245483**
ROUND BRILLIANT
5.17 - 5.22 X 3.09 MM
 Carat Weight 0.50 CARAT
 Color Grade FANCY INTENSE PINK
 Clarity Grade VS 2
 Cut Grade EXCELLENT
 Polish VERY GOOD
 Symmetry VERY GOOD
 Fluorescence SLIGHT
 Inscription(s) LABGROWN IGI
 LG534245483

Comments: This Laboratory Grown Diamond was created by Chemical Vapor Deposition (CVD) growth process. Indications of post-growth treatment.

THIS DOCUMENT WAS PRODUCED WITH THE FOLLOWING SECURITY MEASURES: SPECIAL DOCUMENT PAPER, INK SCREENS, WATERMARK, BACKGROUND DESIGN, HOLOGRAM AND OTHER SECURITY FEATURES NOT LISTED AND DO EXCEED DOCUMENT SECURITY INDUSTRY GUIDELINES.

For terms & conditions and to verify this report, please visit www.igi.org