



ELECTRONIC COPY

LABORATORY GROWN DIAMOND REPORT

July 13, 2022

IGI Report Number **LG534244958**

Description **LABORATORY GROWN
DIAMOND**

Shape and Cutting Style **PRINCESS CUT**

Measurements 7.43 X 7.13 X 5.19 MM

GRADING RESULTS

Carat Weight 2.51 CARATS

Color Grade **FANCY VIVID PINK**

Clarity Grade	SI 2
---------------	------

ADDITIONAL GRADING INFORMATION

Polish **EXCELLENT**Symmetry **EXCELLENT**

Fluorescence SLIGHT

Inscription(s) LABGROWN IGI LG534244958

Comments: This Laboratory Grown Diamond was created by Chemical Vapor Deposition (CVD) growth process.

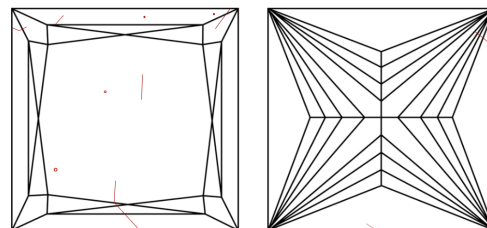
Indications of post-growth treatment.

Diagram illustrating the proportions of a faceted gemstone (likely a diamond) based on the LG534244958 model. The proportions are defined by the following measurements:

- Width:** 72%
- Thickness:** 12%
- Depth:** 56%
- Height:** 72.8%

The diagram also indicates the stone is **Pointed** at the bottom and **Thick To Very Thick Faceted** on the left side.

CLARITY CHARACTERISTICS

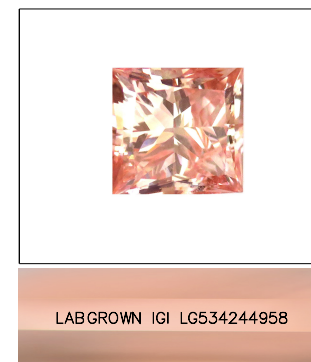


KEY TO SYMBOLS

Red symbols indicate internal characteristics.
Green symbols indicate external characteristics.

GRADING SCALES

COLOR GRADING SCALE	CL		NC		FT		VLT		LT	
	COLORLESS D-F		NEAR COLORLESS G-J		FAINT K-M		VERY LIGHT N-R		LIGHT S-Z	
CLARITY (10x) GRADING SCALE	FL IF		VVS		VS		SI		I	
	FLAWLESS INTERNALLY FLAWLESS		VERY VERY SLIGHTLY INCLUDED		VERY SLIGHTLY INCLUDED		SLIGHTLY INCLUDED		INCLUDED	

LASERSCRIBESM

Sample Image Used



© IGI 2020, International Gemological Institute

FD - 10 20

LABORATORY GROWN DIAMOND REPORT

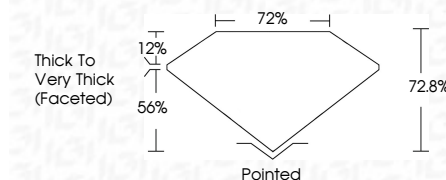
July 13, 2022	
IGI Report Number	LG534244958
Description	LABORATORY GROWN

Shape and Cutting Style **PRINCESS CUT**

Measurements 7.43 X 7.13 X 5.19 MM

GRADING RESULTS

Carat Weight 2.51 CARATS

Color Grade **FANCY VIVID PINK**Clarity Grade SI 2

ADDITIONAL GRADING INFORMATION

Polish **EXCELLENT**Symmetry **EXCELLENT**

Fluorescence SLIGHTLY

Inscription(s) LABGROWN IGI LG534244958

Comments: This Laboratory Grown Diamond was created by Chemical Vapor Deposition (CVD) growth process.
Indications of post-growth treatment.

Indications of post-growth treatment.



July 13, 2022	251 CARATS	SI 2	72%	72%	Pointed
Report No. LG35024098	FANCY VIVID PINK			Thick to Very Thick (facefed)	Excellent
PRINCESS CUT					EXCELLENT
					Slight
					LARGEST OWN LOT
					LG35024098
					Comments:
					This Laboratory Grown Diamond was created by Chemical Vapor Deposition (CVD) growth process.
					Indications of post-growth treatment.