



ELECTRONIC COPY

LABORATORY GROWN DIAMOND REPORT

September 26, 2022
IGI Report Number LG534243478
Description LABORATORY GROWN DIAMOND
Shape and Cutting Style ROUND BRILLIANT
Measurements 7.74 - 7.78 X 4.53 MM

GRADING RESULTS

Carat Weight 1.70 CARAT
Color Grade FANCY INTENSE PINK
Clarity Grade VS 1
Cut Grade EXCELLENT

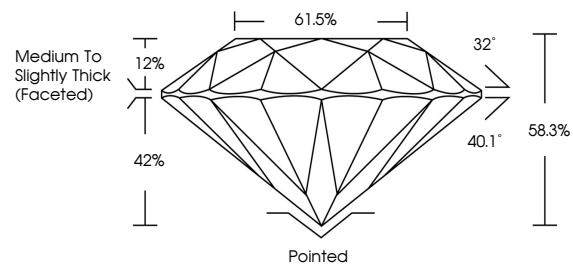
ADDITIONAL GRADING INFORMATION

Polish EXCELLENT
Symmetry EXCELLENT
Fluorescence SLIGHT
Inscription(s) LABGROWN IGI LG534243478

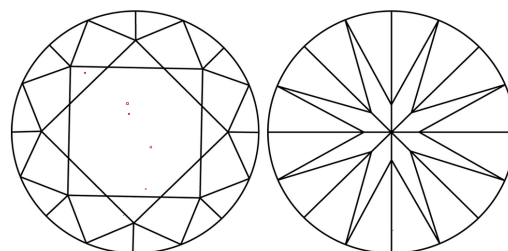
Comments: This Laboratory Grown Diamond was created by Chemical Vapor Deposition (CVD) growth process.
Indications of post-growth treatment.

LG534243478

PROPORTIONS



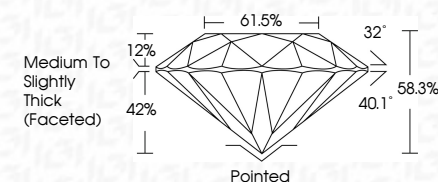
CLARITY CHARACTERISTICS



KEY TO SYMBOLS

Red symbols indicate internal characteristics.
Green symbols indicate external characteristics.

September 26, 2022
IGI Report Number LG534243478
Description LABORATORY GROWN DIAMOND
Shape and Cutting Style ROUND BRILLIANT
Measurements 7.74 - 7.78 X 4.53 MM
GRADING RESULTS
Carat Weight 1.70 CARAT
Color Grade FANCY INTENSE PINK
Clarity Grade VS 1
Cut Grade EXCELLENT



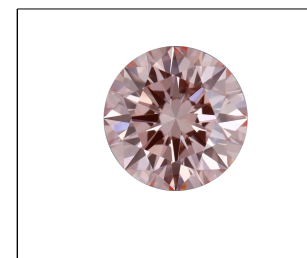
ADDITIONAL GRADING INFORMATION

Polish EXCELLENT
Symmetry EXCELLENT
Fluorescence SLIGHT
Inscription(s) LABGROWN IGI LG534243478

Comments: This Laboratory Grown Diamond was created by Chemical Vapor Deposition (CVD) growth process.
Indications of post-growth treatment.

GRADING SCALES

Table with 2 rows: COLOR GRADING SCALE (CL, NC, FT, VLT, LT) and CLARITY (10x) GRADING SCALE (FL, IF, VVS, VS, SI, I)



LABGROWN IGI LG534243478

LASERSCRIBESM

Sample Image Used



IGI

September 26, 2022
IGI Report No LG534243478
ROUND BRILLIANT
Carat Weight 1.70 CARAT
Color Grade FANCY INTENSE PINK
Clarity Grade VS 1
Cut Grade EXCELLENT
Depth 61.5%
Table 61.5%
Girdle Medium To Slightly Thick (Faceted)
Culet Pointed
Polish EXCELLENT
Symmetry EXCELLENT
Fluorescence SLIGHT
Inscription(s) LABGROWN IGI LG534243478
Comments: This Laboratory Grown Diamond was created by Chemical Vapor Deposition (CVD) growth process.
Indications of post-growth treatment.