



ELECTRONIC COPY

LABORATORY GROWN DIAMOND REPORT

July 13, 2022
IGI Report Number LG534241473
Description LABORATORY GROWN DIAMOND
Shape and Cutting Style ROUND BRILLIANT
Measurements 8.14 - 8.19 X 4.88 MM

GRADING RESULTS

Carat Weight 2.02 CARATS
Color Grade FANCY INTENSE PINK
Clarity Grade VS 1
Cut Grade IDEAL

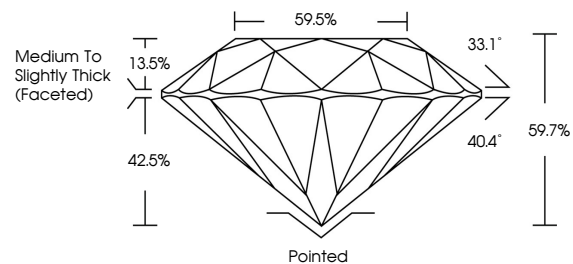
ADDITIONAL GRADING INFORMATION

Polish EXCELLENT
Symmetry EXCELLENT
Fluorescence SLIGHT
Inscription(s) LABGROWN IGI LG534241473

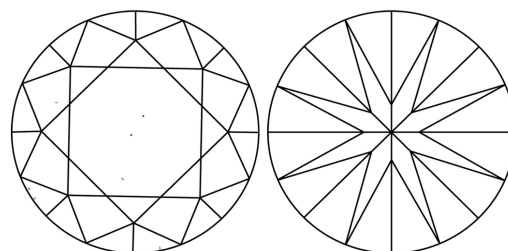
Comments: This Laboratory Grown Diamond was created by Chemical Vapor Deposition (CVD) growth process.
Indications of post-growth treatment.

LG534241473

PROPORTIONS



CLARITY CHARACTERISTICS



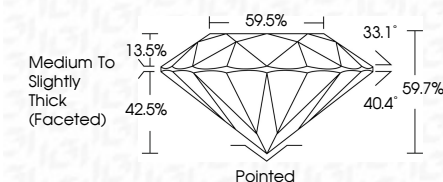
KEY TO SYMBOLS

Red symbols indicate internal characteristics.
Green symbols indicate external characteristics.

GRADING SCALES

Table with 5 columns for Color Grading Scale (CL, NC, FT, VLT, LT) and 5 columns for Clarity (10x) Grading Scale (FL, IF, VVS, VS, SI, I). Color scale ranges from Colorless D-F to Light S-Z. Clarity scale ranges from Flawless Internally Flawless to Included.

July 13, 2022
IGI Report Number LG534241473
Description LABORATORY GROWN DIAMOND
Shape and Cutting Style ROUND BRILLIANT
Measurements 8.14 - 8.19 X 4.88 MM
GRADING RESULTS
Carat Weight 2.02 CARATS
Color Grade FANCY INTENSE PINK
Clarity Grade VS 1
Cut Grade IDEAL



ADDITIONAL GRADING INFORMATION

Polish EXCELLENT
Symmetry EXCELLENT
Fluorescence SLIGHT
Inscription(s) LABGROWN IGI LG534241473
Comments: This Laboratory Grown Diamond was created by Chemical Vapor Deposition (CVD) growth process.
Indications of post-growth treatment.



LABGROWN IGI LG534241473

LASERSCRIBE<sup>SM</sup>

Sample Image Used



IGI

July 13, 2022
IGI Report No LG534241473
ROUND BRILLIANT
8.14 - 8.19 X 4.88 MM
Carat Weight 2.02 CARATS
Color Grade FANCY INTENSE PINK
Clarity Grade VS 1
Cut Grade IDEAL
Depth 59.7%
Table 59.5%
Girdle Medium To Slightly Thick (Faceted)
Culet Pointed
Polish EXCELLENT
Symmetry EXCELLENT
Fluorescence SLIGHT
Inscription(s) LABGROWN IGI LG534241473
Comments: This Laboratory Grown Diamond was created by Chemical Vapor Deposition (CVD) growth process.
Indications of post-growth treatment.