



ELECTRONIC COPY

LABORATORY GROWN DIAMOND REPORT

July 2, 2022
IGI Report Number LG534240886
Description LABORATORY GROWN DIAMOND
Shape and Cutting Style PEAR BRILLIANT
Measurements 10.10 X 6.67 X 4.16 MM

GRADING RESULTS

Carat Weight 1.70 CARAT
Color Grade FANCY INTENSE PINK
Clarity Grade VS 2

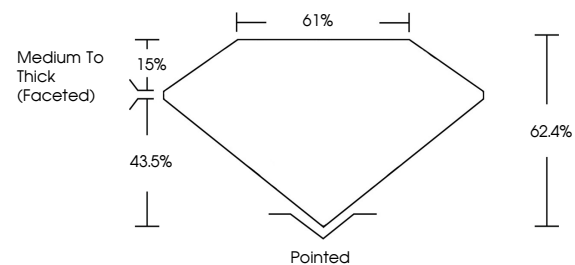
ADDITIONAL GRADING INFORMATION

Polish EXCELLENT
Symmetry EXCELLENT
Fluorescence SLIGHT

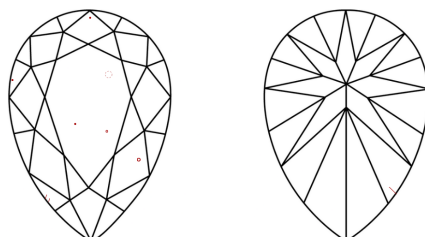
Inscription(s) LABGROWN IGI LG534240886
Comments: This Laboratory Grown Diamond was created by Chemical Vapor Deposition (CVD) growth process.
Indications of post-growth treatment.

LG534240886

PROPORTIONS



CLARITY CHARACTERISTICS



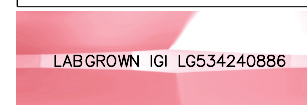
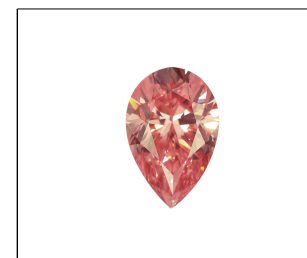
KEY TO SYMBOLS

Red symbols indicate internal characteristics.
Green symbols indicate external characteristics.

LABORATORY GROWN DIAMOND REPORT

GRADING SCALES

Table with 2 columns: COLOR GRADING SCALE and CLARITY (10x) GRADING SCALE. Rows include color grades (CL, NC, FT, VLT, LT) and clarity grades (FL, IF, VVS, VS, SI, I).

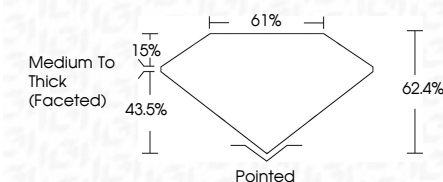


LASERSCRIBESM

Sample Image Used

LABORATORY GROWN DIAMOND REPORT

July 2, 2022
IGI Report Number LG534240886
Description LABORATORY GROWN DIAMOND
Shape and Cutting Style PEAR BRILLIANT
Measurements 10.10 X 6.67 X 4.16 MM
GRADING RESULTS
Carat Weight 1.70 CARAT
Color Grade FANCY INTENSE PINK
Clarity Grade VS 2



ADDITIONAL GRADING INFORMATION

Polish EXCELLENT
Symmetry EXCELLENT
Fluorescence SLIGHT
Inscription(s) LABGROWN IGI LG534240886

Comments: This Laboratory Grown Diamond was created by Chemical Vapor Deposition (CVD) growth process.
Indications of post-growth treatment.



IGI

July 2, 2022
IGI Report No LG534240886
PEAR BRILLIANT
10.10 X 6.67 X 4.16 MM
Carat Weight 1.70 CARAT
Color Grade FANCY INTENSE PINK
Clarity Grade VS 2
Depth 62.4%
Table 61%
Girdle Medium To Thick (Faceted)
Culet Pointed
Polish EXCELLENT
Symmetry EXCELLENT
Fluorescence SLIGHT
Inscription(s) LABGROWN IGI LG534240886
Comments: This Laboratory Grown Diamond was created by Chemical Vapor Deposition (CVD) growth process.
Indications of post-growth treatment.

