



**INTERNATIONAL  
GEMOLOGICAL  
INSTITUTE**

**LABORATORY GROWN DIAMOND REPORT**

**IGI LABORATORY GROWN DIAMOND IDENTIFICATION REPORT**

September 22, 2022  
 IGI Report Number LG534240736  
 Description LABORATORY GROWN DIAMOND  
 Shape and Cutting Style ROUND BRILLIANT  
 Measurements 5.18 - 5.21 X 3.04 MM

**GRADING RESULTS**

Carat Weight 0.50 CARAT  
 Color Grade FANCY INTENSE PINK  
 Clarity Grade VS 1  
 Cut Grade EXCELLENT

**ADDITIONAL GRADING INFORMATION**

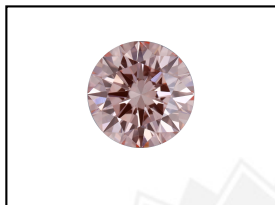
Polish EXCELLENT  
 Symmetry VERY GOOD  
 Fluorescence SLIGHT  
 Inscription(s) LABGROWN IGI LG534240736

Comments: This Laboratory Grown Diamond was created by Chemical Vapor Deposition (CVD) growth process. Indications of post-growth treatment.

**ELECTRONIC COPY**

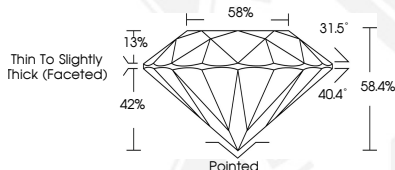
**LABORATORY GROWN  
DIAMOND REPORT**

**LG534240736**



LABGROWN IGI LG534240736

**LASERSCRIBE<sup>SM</sup>**  
Sample Images Used



**IGI LABORATORY GROWN  
DIAMOND ID REPORT**

September 22, 2022  
 IGI Report Number LG534240736  
**ROUND BRILLIANT**  
**5.18 - 5.21 X 3.04 MM**  
 Carat Weight 0.50 CARAT  
 Color Grade FANCY INTENSE PINK  
 Clarity Grade VS 1  
 Cut Grade EXCELLENT  
 Polish EXCELLENT  
 Symmetry VERY GOOD  
 Fluorescence SLIGHT  
 Inscription(s) LABGROWN IGI  
 LG534240736

Comments: This Laboratory Grown Diamond was created by Chemical Vapor Deposition (CVD) growth process. Indications of post-growth treatment.

**IGI LABORATORY GROWN  
DIAMOND ID REPORT**

September 22, 2022  
 IGI Report Number LG534240736  
**ROUND BRILLIANT**  
**5.18 - 5.21 X 3.04 MM**  
 Carat Weight 0.50 CARAT  
 Color Grade FANCY INTENSE PINK  
 Clarity Grade VS 1  
 Cut Grade EXCELLENT  
 Polish EXCELLENT  
 Symmetry VERY GOOD  
 Fluorescence SLIGHT  
 Inscription(s) LABGROWN IGI  
 LG534240736

Comments: This Laboratory Grown Diamond was created by Chemical Vapor Deposition (CVD) growth process. Indications of post-growth treatment.

THIS DOCUMENT WAS PRODUCED WITH THE FOLLOWING SECURITY MEASURES: SPECIAL DOCUMENT PAPER, INK SCREENS, WATERMARK, BACKGROUND DESIGN, HOLOGRAM AND OTHER SECURITY FEATURES NOT LISTED AND DO EXCEED DOCUMENT SECURITY INDUSTRY GUIDELINES.

For terms & conditions and to verify this report, please visit [www.igi.org](http://www.igi.org)