



**INTERNATIONAL
GEMOLOGICAL
INSTITUTE**

ELECTRONIC COPY

**LABORATORY GROWN
DIAMOND REPORT**

**IGI LABORATORY GROWN
DIAMOND ID REPORT**

July 20, 2022
IGI Report Number **LG534240728**

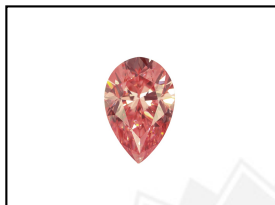
LABORATORY GROWN DIAMOND REPORT

LG534240728

PEAR BRILLIANT
6.99 X 4.56 X 2.74 MM
Carat Weight 0.51 CARAT
Color Grade FANCY INTENSE PINK
Clarity Grade VS 2
Polish EXCELLENT
Symmetry EXCELLENT
Fluorescence SLIGHT
Inscription(s) LABGROWN IGI
LG534240728

IGI LABORATORY GROWN DIAMOND IDENTIFICATION REPORT

July 20, 2022
IGI Report Number LG534240728
Description LABORATORY GROWN DIAMOND
Shape and Cutting Style PEAR BRILLIANT
Measurements 6.99 X 4.56 X 2.74 MM



LABGROWN IGI LG534240728

Comments: This Laboratory Grown Diamond was created by Chemical Vapor Deposition (CVD) growth process. Indications of post-growth treatment.

GRADING RESULTS

Carat Weight 0.51 CARAT
Color Grade FANCY INTENSE PINK
Clarity Grade VS 2

LASERSCRIBESM
Sample Images Used



ADDITIONAL GRADING INFORMATION

Polish EXCELLENT
Symmetry EXCELLENT
Fluorescence SLIGHT
Inscription(s) LABGROWN IGI LG534240728

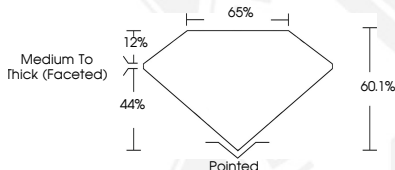
**IGI LABORATORY GROWN
DIAMOND ID REPORT**

July 20, 2022
IGI Report Number **LG534240728**

Comments: This Laboratory Grown Diamond was created by Chemical Vapor Deposition (CVD) growth process. Indications of post-growth treatment.

PEAR BRILLIANT
6.99 X 4.56 X 2.74 MM
Carat Weight 0.51 CARAT
Color Grade FANCY INTENSE PINK
Clarity Grade VS 2
Polish EXCELLENT
Symmetry EXCELLENT
Fluorescence SLIGHT
Inscription(s) LABGROWN IGI
LG534240728

Comments: This Laboratory Grown Diamond was created by Chemical Vapor Deposition (CVD) growth process. Indications of post-growth treatment.



THIS DOCUMENT WAS PRODUCED WITH THE FOLLOWING SECURITY MEASURES: SPECIAL DOCUMENT PAPER, INK SCREENS, WATERMARK, BACKGROUND DESIGN, HOLOGRAM AND OTHER SECURITY FEATURES NOT LISTED AND DO EXCEED DOCUMENT SECURITY INDUSTRY GUIDELINES.

For terms & conditions and to verify this report, please visit www.igi.org