



**INTERNATIONAL  
GEMOLOGICAL  
INSTITUTE**

**ELECTRONIC COPY**

**LABORATORY GROWN  
DIAMOND REPORT**

**IGI LABORATORY GROWN  
DIAMOND ID REPORT**

**LABORATORY GROWN DIAMOND REPORT**

**IGI LABORATORY GROWN DIAMOND IDENTIFICATION REPORT**

July 8, 2022  
IGI Report Number LG534240057  
Description LABORATORY GROWN DIAMOND  
Shape and Cutting Style PEAR BRILLIANT  
Measurements 7.45 X 4.57 X 2.91 MM

**GRADING RESULTS**

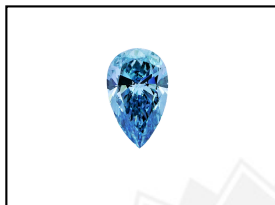
Carat Weight 0.59 CARAT  
Color Grade FANCY VIVID GREENISH BLUE  
Clarity Grade VVS 2

**ADDITIONAL GRADING INFORMATION**

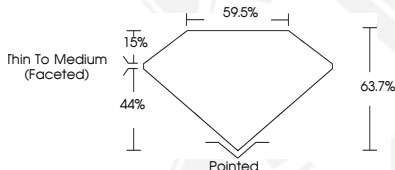
Polish EXCELLENT  
Symmetry EXCELLENT  
Fluorescence NONE  
Inscription(s) LABGROWN IGI LG534240057

Comments: This Laboratory Grown Diamond was created by Chemical Vapor Deposition (CVD) growth process.  
Indications of post-growth treatment.

**LG534240057**



**LASERSCRIBE<sup>SM</sup>**  
Sample Images Used



July 8, 2022  
IGI Report Number **LG534240057**  
**PEAR BRILLIANT**  
**7.45 X 4.57 X 2.91 MM**  
Carat Weight 0.59 CARAT  
Color Grade FANCY VIVID GREENISH BLUE  
Clarity Grade VVS 2  
Polish EXCELLENT  
Symmetry EXCELLENT  
Fluorescence NONE  
Inscription(s) LABGROWN IGI LG534240057

Comments: This Laboratory Grown Diamond was created by Chemical Vapor Deposition (CVD) growth process.  
Indications of post-growth treatment.

**IGI LABORATORY GROWN  
DIAMOND ID REPORT**

July 8, 2022  
IGI Report Number **LG534240057**  
**PEAR BRILLIANT**  
**7.45 X 4.57 X 2.91 MM**

Carat Weight 0.59 CARAT  
Color Grade FANCY VIVID GREENISH BLUE  
Clarity Grade VVS 2  
Polish EXCELLENT  
Symmetry EXCELLENT  
Fluorescence NONE  
Inscription(s) LABGROWN IGI LG534240057

Comments: This Laboratory Grown Diamond was created by Chemical Vapor Deposition (CVD) growth process.  
Indications of post-growth treatment.

THIS DOCUMENT WAS PRODUCED WITH THE FOLLOWING SECURITY MEASURES: SPECIAL DOCUMENT PAPER, INK SCREENS, WATERMARK, BACKGROUND DESIGN, HOLOGRAM AND OTHER SECURITY FEATURES NOT LISTED AND DO EXCEED DOCUMENT SECURITY INDUSTRY GUIDELINES.

For terms & conditions and to verify this report, please visit [www.igi.org](http://www.igi.org)