



**ELECTRONIC COPY**

**LABORATORY GROWN DIAMOND REPORT**

July 2, 2022  
 IGI Report Number **LG534239532**  
 Description **LABORATORY GROWN  
DIAMOND**  
 Shape and Cutting Style **CUT CORNERED  
RECTANGULAR MODIFIED  
BRILLIANT**  
 Measurements **8.65 X 6.15 X 4.36 MM**

**GRADING RESULTS**

Carat Weight **2.01 CARATS**  
 Color Grade **G**  
 Clarity Grade **VS 2**

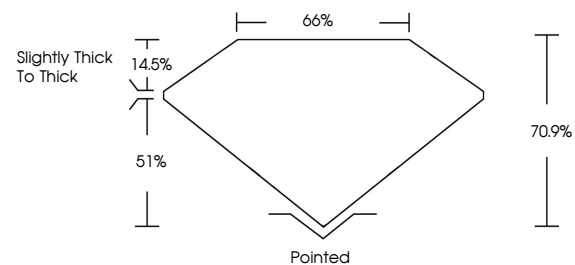
**ADDITIONAL GRADING INFORMATION**

Polish **EXCELLENT**  
 Symmetry **EXCELLENT**  
 Fluorescence **NONE**  
 Inscription(s) **LABGROWN IGI LG534239532**

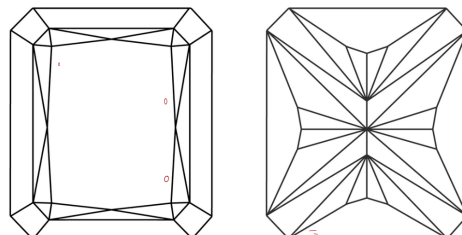
Comments: This Laboratory Grown Diamond was created by Chemical Vapor Deposition (CVD) growth process and may include post-growth treatment. Type IIa

LG534239532

**PROPORTIONS**



**CLARITY CHARACTERISTICS**



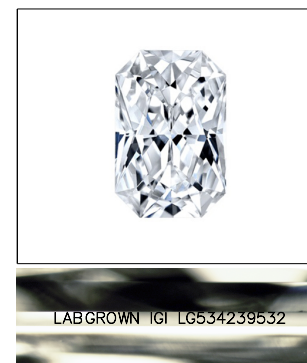
**KEY TO SYMBOLS**

Red symbols indicate internal characteristics.  
 Green symbols indicate external characteristics.

**LABORATORY GROWN  
DIAMOND REPORT**

**GRADING SCALES**

COLOR GRADING SCALE	CL	NC	FT	VLT	LT	
	COLORLESS D-F	NEAR COLORLESS G-J	FAINT K-M	VERY LIGHT N-R	LIGHT S-Z	
CLARITY (10x) GRADING SCALE	FL	IF	VVS	VS	SI	I
	FLAWLESS INTERNALLY FLAWLESS	INTERNAL FLAWLESS	VERY VERY SLIGHTLY INCLUDED	VERY SLIGHTLY INCLUDED	SLIGHTLY INCLUDED	INCLUDED



LASERSCRIBE<sup>SM</sup>

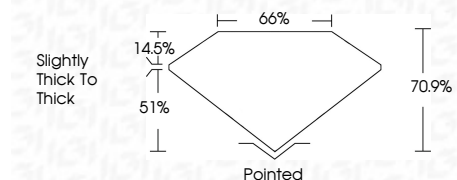
Sample Image Used

LABORATORY GROWN DIAMOND REPORT

July 2, 2022  
 IGI Report Number **LG534239532**  
 Description **LABORATORY GROWN  
DIAMOND**  
 Shape and Cutting Style **CUT CORNERED  
RECTANGULAR MODIFIED  
BRILLIANT**  
 Measurements **8.65 X 6.15 X 4.36 MM**

**GRADING RESULTS**

Carat Weight **2.01 CARATS**  
 Color Grade **G**  
 Clarity Grade **VS 2**



**ADDITIONAL GRADING INFORMATION**

Polish **EXCELLENT**  
 Symmetry **EXCELLENT**  
 Fluorescence **NONE**  
 Inscription(s) **LABGROWN IGI LG534239532**

Comments: This Laboratory Grown Diamond was created by Chemical Vapor Deposition (CVD) growth process and may include post-growth treatment. Type IIa



**IGI**

July 2, 2022  
 IGI Report No **LG534239532**  
**CUT CORNERED RECT. MODIFIED**  
**8.65 X 6.15 X 4.36 MM**  
 Carat Weight **2.01 CARATS**  
 Color Grade **G**  
 Clarity Grade **VS 2**  
 Depth **70.9%**  
 Table **66%**  
 Girdle **Slightly thick to thick**  
 Culet **Pointed**  
 Polish **EXCELLENT**  
 Symmetry **EXCELLENT**  
 Fluorescence **NONE**  
 Inscription(s) **LABGROWN IGI LG534239532**  
 Comments:

This Laboratory Grown Diamond was created by Chemical Vapor Deposition (CVD) growth process and may include post-growth treatment. Type IIa

