



ELECTRONIC COPY

LABORATORY GROWN DIAMOND REPORT

June 27, 2022
IGI Report Number LG534237103
Description LABORATORY GROWN DIAMOND
Shape and Cutting Style CUT CORNERED RECTANGULAR MODIFIED BRILLIANT
Measurements 8.77 X 6.15 X 4.11 MM

GRADING RESULTS

Carat Weight 2.00 CARATS
Color Grade G
Clarity Grade VS 1

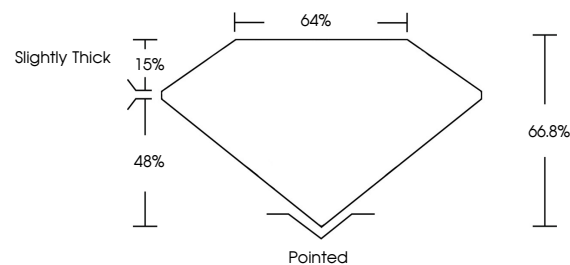
ADDITIONAL GRADING INFORMATION

Polish EXCELLENT
Symmetry EXCELLENT
Fluorescence NONE
Inscription(s) LABGROWN (LGI) LG534237103

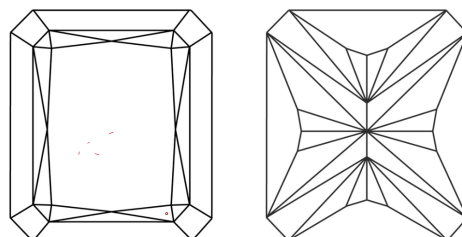
Comments: This Laboratory Grown Diamond was created by Chemical Vapor Deposition (CVD) growth process and may include post-growth treatment. Type IIa

LG534237103

PROPORTIONS



CLARITY CHARACTERISTICS

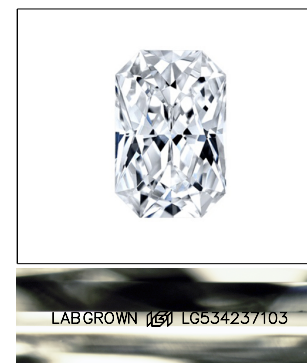


KEY TO SYMBOLS

Red symbols indicate internal characteristics.
Green symbols indicate external characteristics.

GRADING SCALES

Table with 2 columns: COLOR GRADING SCALE and CLARITY (10x) GRADING SCALE. Rows include color grades (CL, NC, FT, VLT, LT) and clarity grades (FL, IF, VVS, VS, SI, I).



LASERSCRIBE SM
Sample Image Used

June 27, 2022
IGI Report Number LG534237103
Description LABORATORY GROWN DIAMOND
Shape and Cutting Style CUT CORNERED RECTANGULAR MODIFIED BRILLIANT
Measurements 8.77 X 6.15 X 4.11 MM

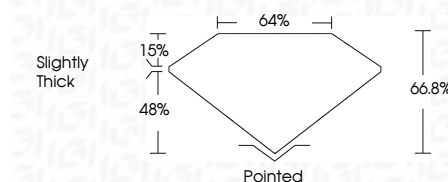
GRADING RESULTS

Carat Weight 2.00 CARATS
Color Grade G
Clarity Grade VS 1

ADDITIONAL GRADING INFORMATION

Polish EXCELLENT
Symmetry EXCELLENT
Fluorescence NONE
Inscription(s) LABGROWN (LGI) LG534237103

Comments: This Laboratory Grown Diamond was created by Chemical Vapor Deposition (CVD) growth process and may include post-growth treatment. Type IIa



Summary box containing report details: June 27, 2022, IGI Report No. LG534237103, CUT CORNERED RECT. MODIFIED, 8.77 X 6.15 X 4.11 MM, Carat Weight 2.00 CARATS, Color Grade G, Clarity Grade VS 1, Depth 66.8%, Table 64%, Girdle Slightly Thick, Culet Pointed, Polish EXCELLENT, Symmetry EXCELLENT, Fluorescence NONE, Inscription(s) LABGROWN (LGI) LG534237103. Includes a QR code and comments about CVD growth process.