

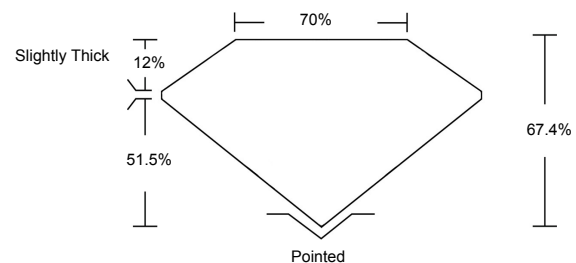


ELECTRONIC COPY

LABORATORY GROWN DIAMOND REPORT

LG534235715

PROPORTIONS



GRADING SCALES

COLOR GRADING SCALE	CL	NC	FT	VL	LT	
	COLORLESS D-F	NEAR COLORLESS G-J	FAINT K-M	VERY LIGHT N-R	LIGHT S-Z	
CLARITY (10x) GRADING SCALE	FL	IF	VVS	VS	SI	I
	FLAWLESS INTERNALLY FLAWLESS	VERY VERY SLIGHTLY INCLUDED	VERY SLIGHTLY INCLUDED	SLIGHTLY INCLUDED	INCLUDED	

June 25, 2022

IGI Report Number

LG534235715

Description

**LABORATORY GROWN
DIAMOND**

Shape and Cutting Style

**CUT CORNERED
RECTANGULAR MODIFIED
BRILLIANT**

Measurements

8.89 X 6.23 X 4.20 MM

GRADING RESULTS

Carat Weight

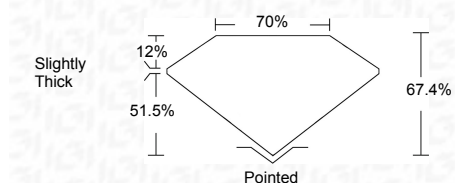
2.02 CARATS

Color Grade

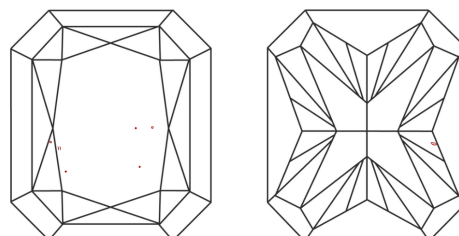
H

Clarity Grade

VS 2

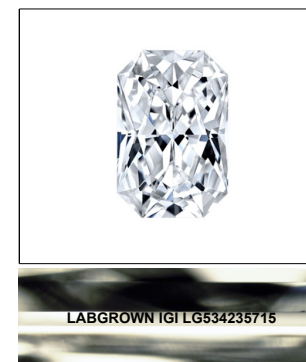


CLARITY CHARACTERISTICS



KEY TO SYMBOLS

Red symbols indicate internal characteristics.
Green symbols indicate external characteristics.



LASERSCRIBESM

Sample Image Used

ADDITIONAL GRADING INFORMATION

Polish

EXCELLENT

Symmetry

EXCELLENT

Fluorescence

NONE

Inscription(s)

LABGROWN IGI LG534235715

Comments: This Laboratory Grown Diamond was created by Chemical Vapor Deposition (CVD) growth process and may include post-growth treatment.
Type IIa



IGI

June 25, 2022	IGI Report No LG534235715	CUT CORNERED RECT. MODIFIED BRILLIANT	8.89 X 6.23 X 4.20 MM	2.02 CARATS	H	VS 2	67.4%	70%	Slightly Thick	Pointed	EXCELLENT	EXCELLENT	NONE	LABGROWN IGI LG534235715

Comments: This Laboratory Grown Diamond was created by Chemical Vapor Deposition (CVD) growth process and may include post-growth treatment.
Type IIa