



**ELECTRONIC COPY**

## LABORATORY GROWN DIAMOND REPORT

June 25, 2022	
IGI Report Number	LG534224910
Description	LABORATORY GROWN DIAMOND
Shape and Cutting Style	CUT CORNERED RECTANGULAR MODIFIED BRILLIANT
Measurements	8.15 X 6.16 X 4.24 MM

## GRADING RESULTS

Carat Weight	2.01 CARATS
Color Grade	F
Clarity Grade	VS 1

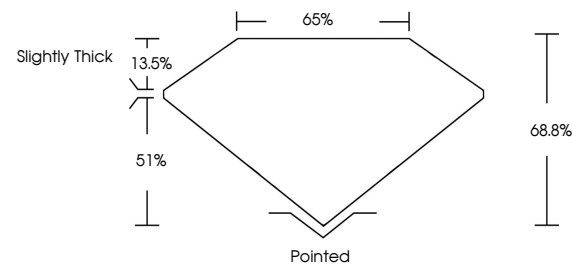
### ADDITIONAL GRADING INFORMATION

Polish	EXCELLENT
Symmetry	EXCELLENT
Fluorescence	NONE

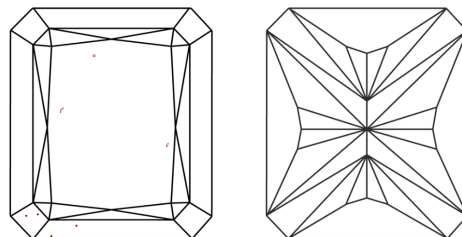
Inscription(s) **LABGROWN IGI LG534224910**  
 Comments: This Laboratory Grown Diamond was created by Chemical Vapor Deposition (CVD) growth process and may include post-growth treatment. Type IIa

LG534224910

## PROPORTIONS



## CLARITY CHARACTERISTICS

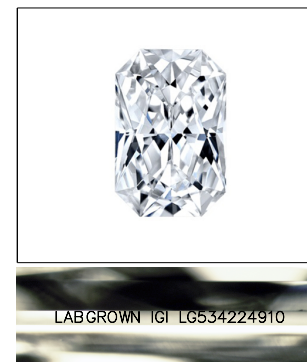


## KEY TO SYMBOLS

Red symbols indicate internal characteristics.  
Green symbols indicate external characteristics.

## GRADING SCALES

COLOR GRADING SCALE	CL		NC		FT		VLT		LT	
	COLORLESS D-F		NEAR COLORLESS G-J		FAINT K-M		VERY LIGHT N-R		LIGHT S-Z	
CLARITY (10x) GRADING SCALE	FL IF		VVS		VS		SI		I	
	FLAWLESS INTERNALLY FLAWLESS		VERY VERY SLIGHTLY INCLUDED		VERY SLIGHTLY INCLUDED		SLIGHTLY INCLUDED		INCLUDED	

LASERSCRIBE<sup>SM</sup>

Sample Image Used



© IGI 2020, International Gemological Institute

FD - 10 20

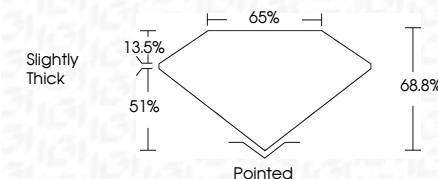
**www.igi.org**

## LABORATORY GROWN DIAMOND REPORT

June 25, 2022	
IGI Report Number	LG534224910
Description	LABORATORY GROWN DIAMOND
Shape and Cutting Style	CUT CORNERED RECTANGULAR MODIFIED BRILLIANT
Measurements	8.15 X 6.16 X 4.24 MM

## GRADING RESULTS

Carat Weight	2.01 CARATS
Color Grade	F
Clarity Grade	VS 1



### ADDITIONAL GRADING INFORMATION

Polish	EXCELLENT
Symmetry	EXCELLENT
Fluorescence	NONE
Inscription(s)	LABGROWN IGI LG534224910

Inscription(s) LABGROWN IGI LG534224910

Comments: This Laboratory Grown Diamond was created by Chemical Vapor Deposition (CVD) growth process and may include post-growth treatment.  
Type IIa



June 26, 2023	201 CARATS	VS 1	68.8%	65%	Slightly Thick	Pointed	EXCELLENT	EXCELLENT	NONE	LABGROWN (G)	LSG54224910	This Laboratory Grown Diamond was produced using a High Pressure High Temperature (HPHT) process (CVD) growth process and may include post-growth treatment. Type IIA
GJ Report No. LGS54224910 CUT CORNERED BEC1 MODIFIED 1.15 X 1.15 X 4.21 MM	Color Weight	Clarity Grade	Depth	Table	Grade	Culet	Symmetry	Fluorescence	Inscriptions(s)	Comments:		
	Color Grade					Polish						