



INTERNATIONAL GEMOLOGICAL INSTITUTE

ELECTRONIC COPY

LABORATORY GROWN DIAMOND REPORT

LG533297729

IGI LABORATORY GROWN DIAMOND ID REPORT

June 13, 2022

IGI Report Number **LG533297729**

**CUT CORNERED RECTANGULAR
MODIFIED BRILLIANT**

6.92 X 4.73 X 3.31 MM

Carat Weight	0.92 CARAT
Color Grade	H
Clarity Grade	VVS 2
Polish	EXCELLENT
Symmetry	EXCELLENT
Fluorescence	NONE
Inscription(s)	LABGROWN IGI LG533297729

Comments: This Laboratory Grown Diamond was created by Chemical Vapor Deposition (CVD) growth process and may include post-growth treatment.
Type IIa

LABORATORY GROWN DIAMOND REPORT

IGI LABORATORY GROWN DIAMOND IDENTIFICATION REPORT

June 13, 2022

IGI Report Number **LG533297729**

Description **LABORATORY GROWN DIAMOND**

Shape and Cutting Style **CUT CORNERED RECTANGULAR MODIFIED
BRILLIANT**

Measurements **6.92 X 4.73 X 3.31 MM**

GRADING RESULTS

Carat Weight **0.92 CARAT**

Color Grade **H**

Clarity Grade **VVS 2**

ADDITIONAL GRADING INFORMATION

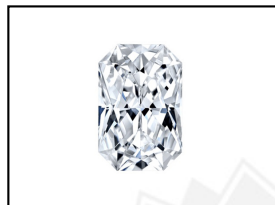
Polish **EXCELLENT**

Symmetry **EXCELLENT**

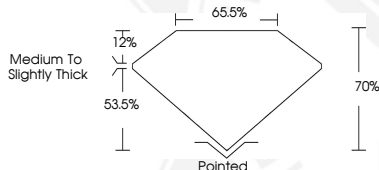
Fluorescence **NONE**

Inscription(s) **LABGROWN IGI LG533297729**

Comments: This Laboratory Grown Diamond was created by Chemical Vapor Deposition (CVD) growth process and may include post-growth treatment.
Type IIa



LASERSCRIBE SM
Sample Images Used



THIS DOCUMENT WAS PRODUCED WITH THE FOLLOWING SECURITY MEASURES: SPECIAL DOCUMENT PAPER, INK SCREENS, WATERMARK, BACKGROUND DESIGN, HOLOGRAM AND OTHER SECURITY FEATURES NOT LISTED AND DO EXCEED DOCUMENT SECURITY INDUSTRY GUIDELINES.

For terms & conditions and to verify this report, please visit www.igi.org

IGI LABORATORY GROWN DIAMOND ID REPORT

June 13, 2022

IGI Report Number **LG533297729**

**CUT CORNERED RECTANGULAR
MODIFIED BRILLIANT**

6.92 X 4.73 X 3.31 MM

Carat Weight	0.92 CARAT
Color Grade	H
Clarity Grade	VVS 2
Polish	EXCELLENT
Symmetry	EXCELLENT
Fluorescence	NONE
Inscription(s)	LABGROWN IGI LG533297729

Comments: This Laboratory Grown Diamond was created by Chemical Vapor Deposition (CVD) growth process and may include post-growth treatment.
Type IIa