



**INTERNATIONAL  
GEMOLOGICAL  
INSTITUTE**

**LABORATORY GROWN DIAMOND REPORT**

**IGI LABORATORY GROWN DIAMOND IDENTIFICATION REPORT**

June 21, 2022  
 IGI Report Number **LG533292794**  
 Description **LABORATORY GROWN DIAMOND**  
 Shape and Cutting Style **CUSHION MODIFIED BRILLIANT**  
 Measurements **4.86 X 4.15 X 2.95 MM**

**GRADING RESULTS**

Carat Weight **0.55 CARAT**  
 Color Grade **FANCY VIVID BLUE**  
 Clarity Grade **SI 2**

**ADDITIONAL GRADING INFORMATION**

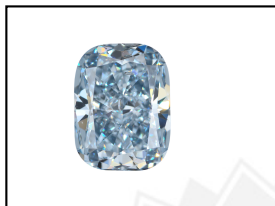
Polish **EXCELLENT**  
 Symmetry **EXCELLENT**  
 Fluorescence **NONE**  
 Inscription(s) **LABGROWN IGI LG533292794**

Comments: As Grown - No indication of post-growth treatment.  
 This Laboratory Grown Diamond was created by High Pressure High Temperature (HPHT) growth process.

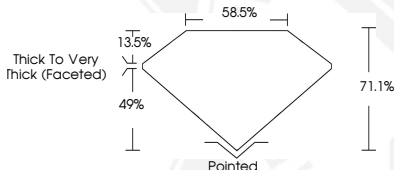
**ELECTRONIC COPY**

**LABORATORY GROWN  
DIAMOND REPORT**

**LG533292794**



**LASERSCRIBE<sup>SM</sup>**  
Sample Images Used



**IGI LABORATORY GROWN  
DIAMOND ID REPORT**

June 21, 2022  
 IGI Report Number **LG533292794**  
**CUSHION MODIFIED BRILLIANT**  
**4.86 X 4.15 X 2.95 MM**  
 Carat Weight **0.55 CARAT**  
 Color Grade **FANCY VIVID BLUE**  
 Clarity Grade **SI 2**  
 Polish **EXCELLENT**  
 Symmetry **EXCELLENT**  
 Fluorescence **NONE**  
 Inscription(s) **LABGROWN IGI LG533292794**

Comments: As Grown - No indication of post-growth treatment.  
 This Laboratory Grown Diamond was created by High Pressure High Temperature (HPHT) growth process.

**IGI LABORATORY GROWN  
DIAMOND ID REPORT**

June 21, 2022  
 IGI Report Number **LG533292794**  
**CUSHION MODIFIED BRILLIANT**  
**4.86 X 4.15 X 2.95 MM**  
 Carat Weight **0.55 CARAT**  
 Color Grade **FANCY VIVID BLUE**  
 Clarity Grade **SI 2**  
 Polish **EXCELLENT**  
 Symmetry **EXCELLENT**  
 Fluorescence **NONE**  
 Inscription(s) **LABGROWN IGI LG533292794**

Comments: As Grown - No indication of post-growth treatment.  
 This Laboratory Grown Diamond was created by High Pressure High Temperature (HPHT) growth process.

THIS DOCUMENT WAS PRODUCED WITH THE FOLLOWING SECURITY MEASURES: SPECIAL DOCUMENT PAPER, INK SCREENS, WATERMARK, BACKGROUND DESIGN, HOLOGRAM AND OTHER SECURITY FEATURES NOT LISTED AND DO EXCEED DOCUMENT SECURITY INDUSTRY GUIDELINES.

For terms & conditions and to verify this report, please visit [www.igi.org](http://www.igi.org)