

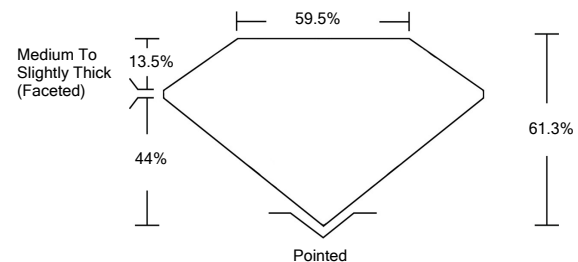


ELECTRONIC COPY

LABORATORY GROWN DIAMOND REPORT

LG533287219

PROPORTIONS



GRADING SCALES

COLOR GRADING SCALE	CL	NC	FT	VLT	LT	
	COLORLESS D-F	NEAR COLORLESS G-J	FAINT K-M	VERY LIGHT N-R	LIGHT S-Z	
CLARITY (10x) GRADING SCALE	FL	IF	VVS	VS	SI	I
	FLAWLESS INTERNALLY FLAWLESS	VERY VERY SLIGHTLY INCLUDED	VERY SLIGHTLY INCLUDED	SLIGHTLY INCLUDED	INCLUDED	

June 10, 2022

IGI Report Number

LG533287219

Description

**LABORATORY GROWN
DIAMOND**

Shape and Cutting Style

OVAL BRILLIANT

Measurements

12.99 X 8.88 X 5.44 MM

GRADING RESULTS

Carat Weight

3.90 CARATS

Color Grade

H

Clarity Grade

VS 2

June 10, 2022

IGI Report Number

LG533287219

Description

**LABORATORY GROWN
DIAMOND**

Shape and Cutting Style

OVAL BRILLIANT

Measurements

12.99 X 8.88 X 5.44 MM

GRADING RESULTS

Carat Weight

3.90 CARATS

Color Grade

H

Clarity Grade

VS 2

ADDITIONAL GRADING INFORMATION

Polish

EXCELLENT

Symmetry

EXCELLENT

Fluorescence

NONE

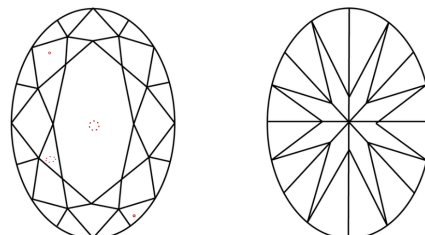
Inscription(s)

LABGROWN IGI LG533287219

Comments: This Laboratory Grown Diamond was created by Chemical Vapor Deposition (CVD) growth process and may include post-growth treatment.

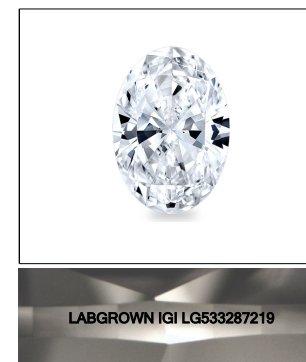
Type IIa

CLARITY CHARACTERISTICS



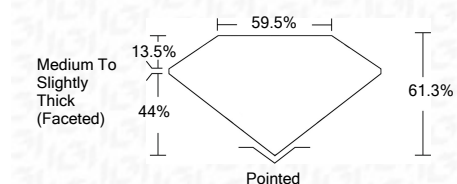
KEY TO SYMBOLS

Red symbols indicate internal characteristics.
Green symbols indicate external characteristics.



LASERSCRIBESM

Sample Image Used



ADDITIONAL GRADING INFORMATION

Polish

EXCELLENT

Symmetry

EXCELLENT

Fluorescence

NONE

Inscription(s)

LABGROWN IGI LG533287219

Comments: This Laboratory Grown Diamond was created by Chemical Vapor Deposition (CVD) growth process and may include post-growth treatment.

Type IIa



IGI

IGI Report No. LG533287219	3.90 CARATS	H	Pointed
OVAL BRILLIANT	VS 2	EXCELLENT	EXCELLENT
12.99 X 8.88 X 5.44 MM	61.3%	EXCELLENT	EXCELLENT
Carat Weight	59.5%	EXCELLENT	EXCELLENT
Color Grade	Medium To Slightly Thick (Faceted)	NONE	NONE
Clarity Grade	LABGROWN IGI LG533287219	LABGROWN IGI LG533287219	LABGROWN IGI LG533287219
Depth			
Table			
Girdle			
Culet			
Polish			
Symmetry			
Fluorescence			
Inscription(s)			
Comments:			

This Laboratory Grown Diamond was created by Chemical Vapor Deposition (CVD) growth process and may include post-growth treatment.
Type IIa