



ELECTRONIC COPY

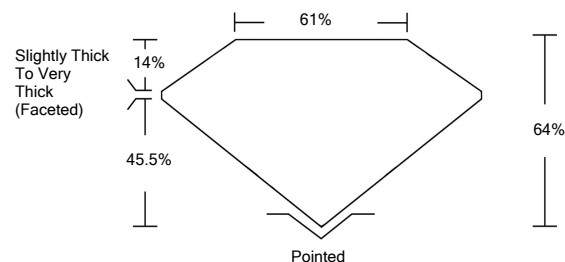
LABORATORY GROWN DIAMOND REPORT

LG532262931

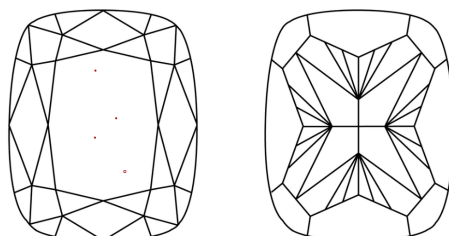
GRADING SCALES

| | | | | | | |
|-----------------------------|------------------------------|-----------------------------|------------------------|-------------------|-----------|---|
| COLOR GRADING SCALE | CL | NC | FT | VL | LT | |
| | COLORLESS D-F | NEAR COLORLESS G-J | FAINT K-M | VERY LIGHT N-R | LIGHT S-Z | |
| CLARITY (10x) GRADING SCALE | FL | IF | VVS | VS | SI | I |
| | FLAWLESS INTERNALLY FLAWLESS | VERY VERY SLIGHTLY INCLUDED | VERY SLIGHTLY INCLUDED | SLIGHTLY INCLUDED | INCLUDED | |

PROPORTIONS

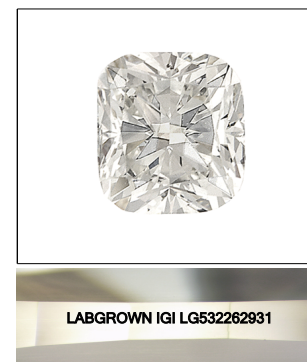


CLARITY CHARACTERISTICS



KEY TO SYMBOLS

Red symbols indicate internal characteristics.
Green symbols indicate external characteristics.



LASERSCRIBESM

Sample Image Used

June 8, 2022

IGI Report Number **LG532262931**

Description **LABORATORY GROWN DIAMOND**

Shape and Cutting Style **CUSHION BRILLIANT**

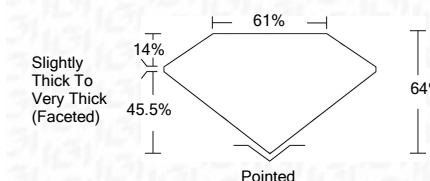
Measurements **8.47 X 7.12 X 4.56 MM**

GRADING RESULTS

Carat Weight **2.51 CARATS**

Color Grade **F**

Clarity Grade **VS 1**



ADDITIONAL GRADING INFORMATION

Polish **EXCELLENT**

Symmetry **EXCELLENT**

Fluorescence **NONE**

Inscription(s) **LABGROWN IGI LG532262931**

Comments: This Laboratory Grown Diamond was created by Chemical Vapor Deposition (CVD) growth process and may include post-growth treatment.
Type IIa

June 8, 2022

IGI Report Number **LG532262931**

Description **LABORATORY GROWN DIAMOND**

Shape and Cutting Style **CUSHION BRILLIANT**

Measurements **8.47 X 7.12 X 4.56 MM**

GRADING RESULTS

Carat Weight **2.51 CARATS**

Color Grade **F**

Clarity Grade **VS 1**

ADDITIONAL GRADING INFORMATION

Polish **EXCELLENT**

Symmetry **EXCELLENT**

Fluorescence **NONE**

Inscription(s) **LABGROWN IGI LG532262931**

Comments: This Laboratory Grown Diamond was created by Chemical Vapor Deposition (CVD) growth process and may include post-growth treatment.
Type IIa



IGI



| | | | | | | | | | | |
|----------------------------|-----------------------|---|------|-----|-----|--|-----------|-----------|------|--------------------------|
| IGI Report No. LG532262931 | 2.51 CARATS | F | VS 1 | 61% | 61% | Pointed | EXCELLENT | EXCELLENT | NONE | LABGROWN IGI LG532262931 |
| CUSHION BRILLIANT | 8.47 X 7.12 X 4.56 MM | | | | | Slightly Thick To Very Thick (Faceted) | | | | |
| Carat Weight | | | | | | | | | | |
| Color Grade | | | | | | | | | | |
| Clarity Grade | | | | | | | | | | |
| Depth | | | | | | | | | | |
| Table | | | | | | | | | | |
| Girdle | | | | | | | | | | |
| Culet | | | | | | | | | | |
| Polish | | | | | | | | | | |
| Symmetry | | | | | | | | | | |
| Fluorescence | | | | | | | | | | |
| Inscription(s) | | | | | | | | | | |
| Comments: | | | | | | | | | | |

This Laboratory Grown Diamond was created by Chemical Vapor Deposition (CVD) growth process and may include post-growth treatment.
Type IIa