

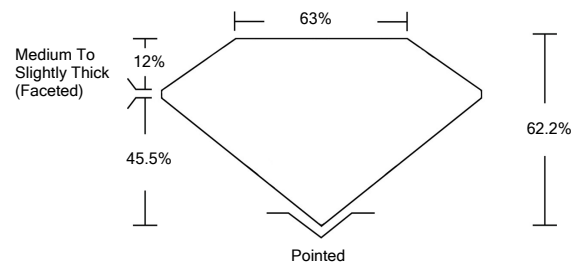


**ELECTRONIC COPY**

**LABORATORY GROWN DIAMOND REPORT**

LG532260903

**PROPORTIONS**



**GRADING SCALES**

COLOR GRADING SCALE	CL	NC	FT	VL	LT	
	COLORLESS D-F	NEAR COLORLESS G-J	FAINT K-M	VERY LIGHT N-R	LIGHT S-Z	
CLARITY (10x) GRADING SCALE	FL	IF	VVS	VS	SI	I
	FLAWLESS INTERNALLY FLAWLESS	VERY VERY SLIGHTLY INCLUDED	VERY SLIGHTLY INCLUDED	SLIGHTLY INCLUDED	INCLUDED	

June 8, 2022

IGI Report Number **LG532260903**

Description **LABORATORY GROWN DIAMOND**

Shape and Cutting Style **OVAL BRILLIANT**

Measurements **11.59 X 8.36 X 5.20 MM**

**GRADING RESULTS**

Carat Weight **3.15 CARATS**

Color Grade **F**

Clarity Grade **VS 2**

June 8, 2022

IGI Report Number **LG532260903**

Description **LABORATORY GROWN DIAMOND**

Shape and Cutting Style **OVAL BRILLIANT**

Measurements **11.59 X 8.36 X 5.20 MM**

**GRADING RESULTS**

Carat Weight **3.15 CARATS**

Color Grade **F**

Clarity Grade **VS 2**

**ADDITIONAL GRADING INFORMATION**

Polish **EXCELLENT**

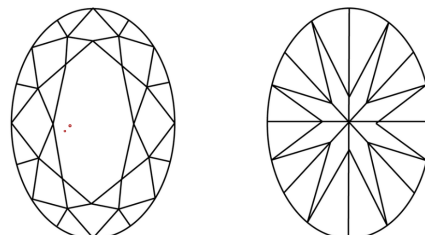
Symmetry **EXCELLENT**

Fluorescence **NONE**

Inscription(s) **LABGROWN IGI LG532260903**

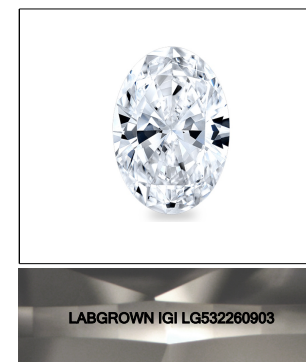
Comments: This Laboratory Grown Diamond was created by Chemical Vapor Deposition (CVD) growth process and may include post-growth treatment.  
Type IIa

**CLARITY CHARACTERISTICS**

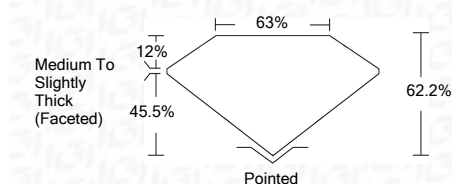


**KEY TO SYMBOLS**

Red symbols indicate internal characteristics.  
Green symbols indicate external characteristics.



**LASERSCRIBE<sup>SM</sup>**  
Sample Image Used



**ADDITIONAL GRADING INFORMATION**

Polish **EXCELLENT**

Symmetry **EXCELLENT**

Fluorescence **NONE**

Inscription(s) **LABGROWN IGI LG532260903**

Comments: This Laboratory Grown Diamond was created by Chemical Vapor Deposition (CVD) growth process and may include post-growth treatment.  
Type IIa



**IGI**

IGI Report No. LG532260903	3.15 CARATS	F	VS 2	62.2%	63%	Pointed	EXCELLENT	EXCELLENT	NONE	LABGROWN IGI LG532260903	Comments:
June 8, 2022	11.59 X 8.36 X 5.20 MM	Medium To Slightly Thick (Faceted)	Polish	Symmetry	Fluorescence	Inscription(s)	This Laboratory Grown Diamond was created by Chemical Vapor Deposition (CVD) growth process and may include post-growth treatment. Type IIa				