



**ELECTRONIC COPY**

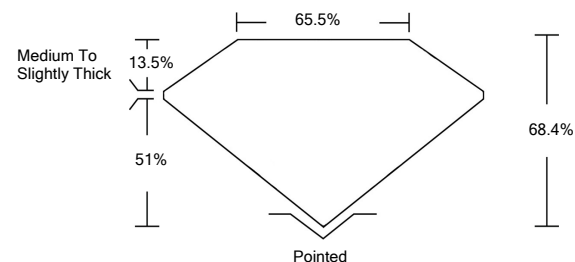
**LABORATORY GROWN DIAMOND REPORT**

LG532260889

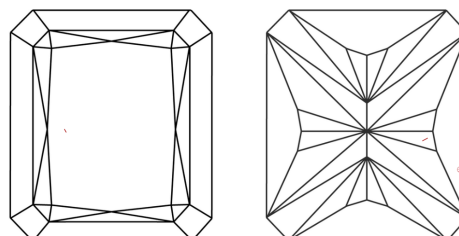
**GRADING SCALES**

|                             |                              |                             |                        |                   |           |   |
|-----------------------------|------------------------------|-----------------------------|------------------------|-------------------|-----------|---|
| COLOR GRADING SCALE         | CL                           | NC                          | FT                     | VL                | LT        |   |
|                             | COLORLESS D-F                | NEAR COLORLESS G-J          | FAINT K-M              | VERY LIGHT N-R    | LIGHT S-Z |   |
| CLARITY (10x) GRADING SCALE | FL                           | IF                          | VVS                    | VS                | SI        | I |
|                             | FLAWLESS INTERNALLY FLAWLESS | VERY VERY SLIGHTLY INCLUDED | VERY SLIGHTLY INCLUDED | SLIGHTLY INCLUDED | INCLUDED  |   |

**PROPORTIONS**

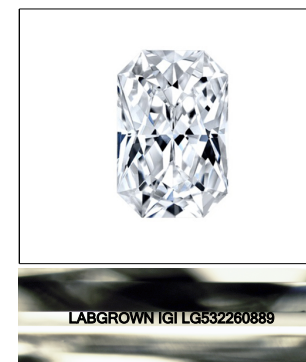


**CLARITY CHARACTERISTICS**



**KEY TO SYMBOLS**

Red symbols indicate internal characteristics.  
Green symbols indicate external characteristics.



LASERSCRIBE<sup>SM</sup>  
Sample Image Used

June 8, 2022

IGI Report Number **LG532260889**

Description **LABORATORY GROWN DIAMOND**

Shape and Cutting Style **CUT CORNERED RECTANGULAR MODIFIED BRILLIANT**

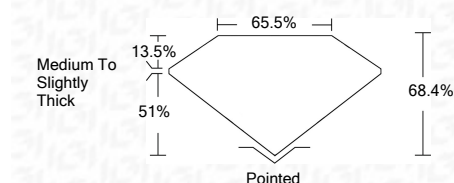
Measurements **8.14 X 5.94 X 4.06 MM**

**GRADING RESULTS**

Carat Weight **1.81 CARAT**

Color Grade **H**

Clarity Grade **VS 1**



**ADDITIONAL GRADING INFORMATION**

Polish **EXCELLENT**

Symmetry **EXCELLENT**

Fluorescence **NONE**

Inscription(s) **LABGROWN IGI LG532260889**

Comments: This Laboratory Grown Diamond was created by Chemical Vapor Deposition (CVD) growth process and may include post-growth treatment.  
Type IIa

June 8, 2022

IGI Report Number **LG532260889**

Description **LABORATORY GROWN DIAMOND**

Shape and Cutting Style **CUT CORNERED RECTANGULAR MODIFIED BRILLIANT**

Measurements **8.14 X 5.94 X 4.06 MM**

**GRADING RESULTS**

Carat Weight **1.81 CARAT**

Color Grade **H**

Clarity Grade **VS 1**

**ADDITIONAL GRADING INFORMATION**

Polish **EXCELLENT**

Symmetry **EXCELLENT**

Fluorescence **NONE**

Inscription(s) **LABGROWN IGI LG532260889**

Comments: This Laboratory Grown Diamond was created by Chemical Vapor Deposition (CVD) growth process and may include post-growth treatment.  
Type IIa



**IGI**

|                            |                                       |                       |            |       |        |       |        |                          |              |                |           |  |                          |
|----------------------------|---------------------------------------|-----------------------|------------|-------|--------|-------|--------|--------------------------|--------------|----------------|-----------|--|--------------------------|
| IGI Report No. LG532260889 | CUT CORNERED RECT. MODIFIED BRILLIANT | 8.14 X 5.94 X 4.06 MM | 1.81 CARAT | H     | VS 1   | 68.4% | 65.5%  | Medium To Slightly Thick | Pointed      | EXCELLENT      | EXCELLENT | NONE   | LABGROWN IGI LG532260889 |
| June 8, 2022               | Color Grade                           | Clarity Grade         | Depth      | Table | Girdle | Culet | Polish | Symmetry                 | Fluorescence | Inscription(s) | Comments: | This Laboratory Grown Diamond was created by Chemical Vapor Deposition (CVD) growth process and may include post-growth treatment.<br>Type IIa |                          |