



ELECTRONIC COPY

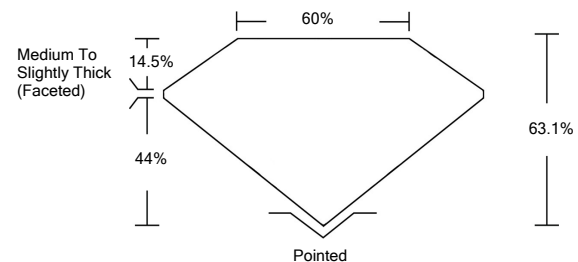
LABORATORY GROWN DIAMOND REPORT

LG532256473

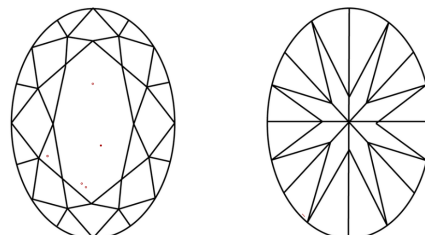
GRADING SCALES

COLOR GRADING SCALE	CL	NC	FT	VLT	LT	
	COLORLESS D-F	NEAR COLORLESS G-J	FAINT K-M	VERY LIGHT N-R	LIGHT S-Z	
CLARITY (10x) GRADING SCALE	FL	IF	VVS	VS	SI	I
	FLAWLESS INTERNALLY FLAWLESS	VERY VERY SLIGHTLY INCLUDED	VERY SLIGHTLY INCLUDED	SLIGHTLY INCLUDED	INCLUDED	

PROPORTIONS

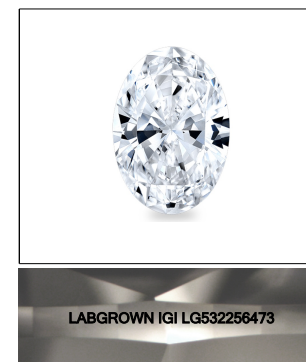


CLARITY CHARACTERISTICS



KEY TO SYMBOLS

Red symbols indicate internal characteristics.
Green symbols indicate external characteristics.



LASERSCRIBESM
Sample Image Used

June 2, 2022

IGI Report Number **LG532256473**

Description **LABORATORY GROWN DIAMOND**

Shape and Cutting Style **OVAL BRILLIANT**

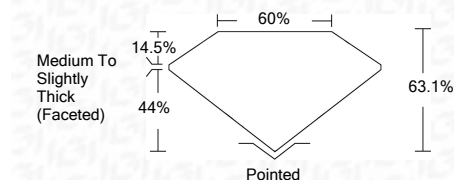
Measurements **10.82 X 7.77 X 4.90 MM**

GRADING RESULTS

Carat Weight **2.61 CARATS**

Color Grade **I**

Clarity Grade **VS 1**



ADDITIONAL GRADING INFORMATION

Polish **EXCELLENT**

Symmetry **EXCELLENT**

Fluorescence **NONE**

Inscription(s) **LABGROWN IGI LG532256473**

Comments: This Laboratory Grown Diamond was created by Chemical Vapor Deposition (CVD) growth process and may include post-growth treatment.
Type IIa

June 2, 2022

IGI Report Number **LG532256473**

Description **LABORATORY GROWN DIAMOND**

Shape and Cutting Style **OVAL BRILLIANT**

Measurements **10.82 X 7.77 X 4.90 MM**

GRADING RESULTS

Carat Weight **2.61 CARATS**

Color Grade **I**

Clarity Grade **VS 1**

ADDITIONAL GRADING INFORMATION

Polish **EXCELLENT**

Symmetry **EXCELLENT**

Fluorescence **NONE**

Inscription(s) **LABGROWN IGI LG532256473**

Comments: This Laboratory Grown Diamond was created by Chemical Vapor Deposition (CVD) growth process and may include post-growth treatment.
Type IIa



IGI

IGI Report No. LG532256473	2.61 CARATS
OVAL BRILLIANT	I
10.82 X 7.77 X 4.90 MM	VS 1
Carat Weight	63.1%
Color Grade	60%
Clarity Grade	Medium To Slightly Thick (Faceted)
Depth	Pointed
Table	EXCELLENT
Girdle	EXCELLENT
Culet	NONE
Polish	LABGROWN IGI LG532256473
Symmetry	
Fluorescence	
Inscription(s)	
Comments:	

This Laboratory Grown Diamond was created by Chemical Vapor Deposition (CVD) growth process and may include post-growth treatment.
Type IIa