



**INTERNATIONAL
GEMOLOGICAL
INSTITUTE**

ELECTRONIC COPY

**LABORATORY GROWN
DIAMOND REPORT**

**IGI LABORATORY GROWN
DIAMOND ID REPORT**

September 22, 2022

IGI Report Number **LG532246171**

PEAR BRILLIANT

6.87 X 4.48 X 2.65 MM

Carat Weight 0.50 CARAT
Color Grade FANCY INTENSE PINK
Clarity Grade VS 2
Polish EXCELLENT
Symmetry VERY GOOD
Fluorescence SLIGHT
Inscription(s) LABGROWN IGI
LG532246171

Comments: This Laboratory Grown Diamond was created by Chemical Vapor Deposition (CVD) growth process. Indications of post-growth treatment.

LABORATORY GROWN DIAMOND REPORT

IGI LABORATORY GROWN DIAMOND IDENTIFICATION REPORT

September 22, 2022

IGI Report Number **LG532246171**

Description **LABORATORY GROWN DIAMOND**

Shape and Cutting Style **PEAR BRILLIANT**

Measurements **6.87 X 4.48 X 2.65 MM**

GRADING RESULTS

Carat Weight **0.50 CARAT**

Color Grade **FANCY INTENSE PINK**

Clarity Grade **VS 2**

ADDITIONAL GRADING INFORMATION

Polish **EXCELLENT**

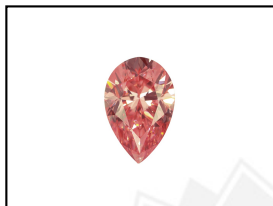
Symmetry **VERY GOOD**

Fluorescence **SLIGHT**

Inscription(s) **LABGROWN IGI LG532246171**

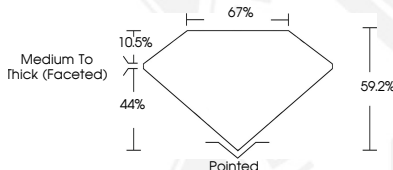
Comments: This Laboratory Grown Diamond was created by Chemical Vapor Deposition (CVD) growth process. Indications of post-growth treatment.

LG532246171



LABGROWN IGI LG532246171

LASERSCRIBESM
Sample Images Used



THIS DOCUMENT WAS PRODUCED WITH THE FOLLOWING SECURITY MEASURES: SPECIAL DOCUMENT PAPER, INK SCREENS, WATERMARK, BACKGROUND DESIGN, HOLOGRAM AND OTHER SECURITY FEATURES NOT LISTED AND DO EXCEED DOCUMENT SECURITY INDUSTRY GUIDELINES.

For terms & conditions and to verify this report, please visit www.igi.org

**IGI LABORATORY GROWN
DIAMOND ID REPORT**

September 22, 2022

IGI Report Number **LG532246171**

PEAR BRILLIANT

6.87 X 4.48 X 2.65 MM

Carat Weight 0.50 CARAT
Color Grade FANCY INTENSE PINK
Clarity Grade VS 2
Polish EXCELLENT
Symmetry VERY GOOD
Fluorescence SLIGHT
Inscription(s) LABGROWN IGI
LG532246171

Comments: This Laboratory Grown Diamond was created by Chemical Vapor Deposition (CVD) growth process. Indications of post-growth treatment.