



ELECTRONIC COPY

LABORATORY GROWN DIAMOND REPORT

June 16, 2022
IGI Report Number LG532245834
Description LABORATORY GROWN DIAMOND
Shape and Cutting Style PRINCESS CUT
Measurements 6.91 X 6.85 X 4.67 MM

GRADING RESULTS

Carat Weight 2.01 CARATS
Color Grade FANCY INTENSE GREENISH BLUE
Clarity Grade VS 1

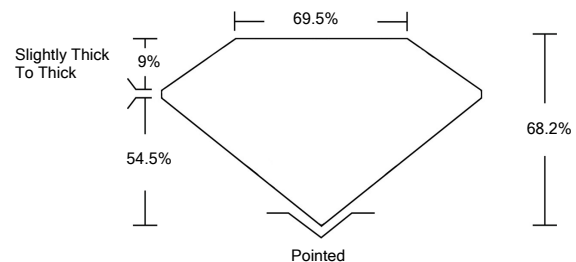
ADDITIONAL GRADING INFORMATION

Polish EXCELLENT
Symmetry EXCELLENT
Fluorescence NONE
Inscription(s) LABGROWN IGI LG532245834

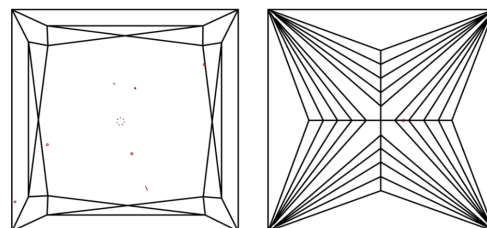
Comments: This Laboratory Grown Diamond was created by Chemical Vapor Deposition (CVD) growth process. Indications of post-growth treatment.

LG532245834

PROPORTIONS



CLARITY CHARACTERISTICS



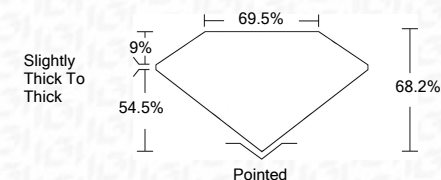
KEY TO SYMBOLS

Red symbols indicate internal characteristics.
Green symbols indicate external characteristics.

LABORATORY GROWN DIAMOND REPORT

LABORATORY GROWN DIAMOND REPORT

June 16, 2022
IGI Report Number LG532245834
Description LABORATORY GROWN DIAMOND
Shape and Cutting Style PRINCESS CUT
Measurements 6.91 X 6.85 X 4.67 MM
GRADING RESULTS
Carat Weight 2.01 CARATS
Color Grade FANCY INTENSE GREENISH BLUE
Clarity Grade VS 1



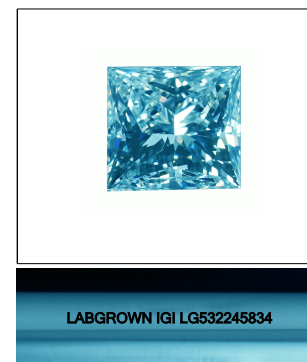
ADDITIONAL GRADING INFORMATION

Polish EXCELLENT
Symmetry EXCELLENT
Fluorescence NONE
Inscription(s) LABGROWN IGI LG532245834

Comments: This Laboratory Grown Diamond was created by Chemical Vapor Deposition (CVD) growth process. Indications of post-growth treatment.

GRADING SCALES

Table with 2 main sections: COLOR GRADING SCALE and CLARITY (10x) GRADING SCALE. It lists various grades from Colorless to Light and Flawless to Included.



LASERSCRIBE SM
Sample Image Used



IGI

June 16, 2022
IGI Report No. LG532245834
PRINCESS CUT
6.91 X 6.85 X 4.67 MM
2.01 CARATS
FANCY INTENSE GREENISH BLUE
Color Grade VS 1
Clarity Grade 68.2%
Depth 54.5%
Table 9%
Girdle Slightly Thick To Thick
Pointed
Polish EXCELLENT
Symmetry EXCELLENT
Fluorescence NONE
Inscription(s) LABGROWN IGI LG532245834
Comments:

This Laboratory Grown Diamond was created by Chemical Vapor Deposition (CVD) growth process. Indications of post-growth treatment.