



ELECTRONIC COPY

LABORATORY GROWN DIAMOND REPORT

June 13, 2022
 IGI Report Number **LG532245397**
 Description **LABORATORY GROWN
DIAMOND**
 Shape and Cutting Style **PEAR BRILLIANT**
 Measurements **10.23 X 6.73 X 4.22 MM**

GRADING RESULTS

Carat Weight **1.70 CARAT**
 Color Grade **FANCY VIVID PINK**
 Clarity Grade **VS 2**

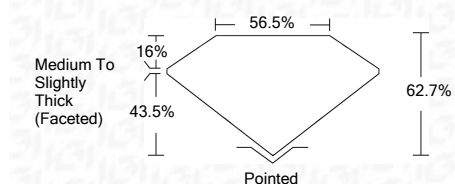
ADDITIONAL GRADING INFORMATION

Polish **EXCELLENT**
 Symmetry **EXCELLENT**
 Fluorescence **SLIGHT**
 Inscription(s) **LABGROWN IGI LG532245397**
 Comments: This Laboratory Grown Diamond was created by Chemical Vapor Deposition (CVD) growth process. Indications of post-growth treatment.

June 13, 2022
 IGI Report Number **LG532245397**
 Description **LABORATORY GROWN
DIAMOND**
 Shape and Cutting Style **PEAR BRILLIANT**
 Measurements **10.23 X 6.73 X 4.22 MM**

GRADING RESULTS

Carat Weight **1.70 CARAT**
 Color Grade **FANCY VIVID PINK**
 Clarity Grade **VS 2**

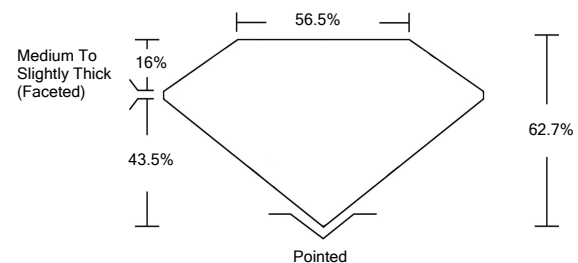


ADDITIONAL GRADING INFORMATION

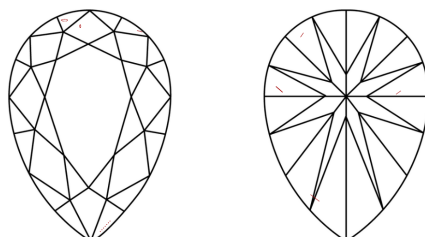
Polish **EXCELLENT**
 Symmetry **EXCELLENT**
 Fluorescence **SLIGHT**
 Inscription(s) **LABGROWN IGI LG532245397**
 Comments: This Laboratory Grown Diamond was created by Chemical Vapor Deposition (CVD) growth process. Indications of post-growth treatment.

LG532245397

PROPORTIONS



CLARITY CHARACTERISTICS

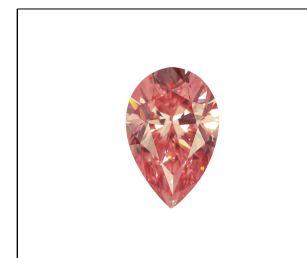


KEY TO SYMBOLS

Red symbols indicate internal characteristics.
 Green symbols indicate external characteristics.

GRADING SCALES

| COLOR GRADING SCALE | CL | NC | FT | VLT | LT | |
|-----------------------------|------------------------------|-----------------------------|------------------------|-------------------|-----------|----------|
| | COLORLESS D-F | NEAR COLORLESS G-J | FAINT K-M | VERY LIGHT N-R | LIGHT S-Z | |
| CLARITY (10x) GRADING SCALE | FL | IF | VVS | VS | SI | I |
| | FLAWLESS INTERNALLY FLAWLESS | VERY VERY SLIGHTLY INCLUDED | VERY SLIGHTLY INCLUDED | SLIGHTLY INCLUDED | | INCLUDED |



LASERSCRIBESM

Sample Image Used



IGI

June 13, 2022
 IGI Report No. **LG532245397**
PEAR BRILLIANT
 10.23 X 6.73 X 4.22 MM
 Carat Weight **1.70 CARAT**
 Color Grade **FANCY VIVID PINK**
 Clarity Grade **VS 2**
 Depth **62.7%**
 Table **43.5%**
 Girdle **Medium To Slightly Thick (Faceted)**
 Culet **Pointed**
 Polish **EXCELLENT**
 Symmetry **EXCELLENT**
 Fluorescence **SLIGHT**
 Inscription(s) **LABGROWN IGI LG532245397**
 Comments: This Laboratory Grown Diamond was created by Chemical Vapor Deposition (CVD) growth process. Indications of post-growth treatment.