



**INTERNATIONAL
GEMOLOGICAL
INSTITUTE**

LABORATORY GROWN DIAMOND REPORT

IGI LABORATORY GROWN DIAMOND IDENTIFICATION REPORT

June 11, 2022
 IGI Report Number LG532244503
 Description LABORATORY GROWN DIAMOND
 Shape and Cutting Style ROUND BRILLIANT
 Measurements 4.71 - 4.79 X 2.90 MM

GRADING RESULTS

Carat Weight 0.40 CARAT
 Color Grade FANCY INTENSE PINK
 Clarity Grade SI 1
 Cut Grade IDEAL

ADDITIONAL GRADING INFORMATION

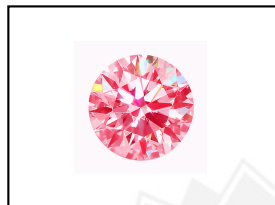
Polish VERY GOOD
 Symmetry GOOD
 Fluorescence SLIGHT
 Inscription(s) LABGROWN IGI LG532244503

Comments: This Laboratory Grown Diamond was created by Chemical Vapor Deposition (CVD) growth process.
 Indications of post-growth treatment.

ELECTRONIC COPY

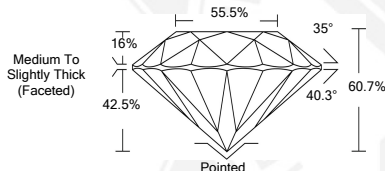
**LABORATORY GROWN
DIAMOND REPORT**

LG532244503



LABGROWN IGI LG532244503

LASERSCRIBESM
Sample Images Used



**IGI LABORATORY GROWN
DIAMOND ID REPORT**

June 11, 2022
 IGI Report Number **LG532244503**
ROUND BRILLIANT
4.71 - 4.79 X 2.90 MM
 Carat Weight 0.40 CARAT
 Color Grade FANCY INTENSE PINK
 Clarity Grade SI 1
 Cut Grade IDEAL
 Polish VERY GOOD
 Symmetry GOOD
 Fluorescence SLIGHT
 Inscription(s) LABGROWN IGI LG532244503

Comments: This Laboratory Grown Diamond was created by Chemical Vapor Deposition (CVD) growth process.
 Indications of post-growth treatment.

**IGI LABORATORY GROWN
DIAMOND ID REPORT**

June 11, 2022
 IGI Report Number **LG532244503**
ROUND BRILLIANT
4.71 - 4.79 X 2.90 MM
 Carat Weight 0.40 CARAT
 Color Grade FANCY INTENSE PINK
 Clarity Grade SI 1
 Cut Grade IDEAL
 Polish VERY GOOD
 Symmetry GOOD
 Fluorescence SLIGHT
 Inscription(s) LABGROWN IGI LG532244503

Comments: This Laboratory Grown Diamond was created by Chemical Vapor Deposition (CVD) growth process.
 Indications of post-growth treatment.

THIS DOCUMENT WAS PRODUCED WITH THE FOLLOWING SECURITY MEASURES: SPECIAL DOCUMENT PAPER, INK SCREENS, WATERMARK, BACKGROUND DESIGN, HOLOGRAM AND OTHER SECURITY FEATURES NOT LISTED AND DO EXCEED DOCUMENT SECURITY INDUSTRY GUIDELINES.

For terms & conditions and to verify this report, please visit www.igi.org