



INTERNATIONAL GEMOLOGICAL INSTITUTE

ELECTRONIC COPY

LABORATORY GROWN DIAMOND REPORT

LG532244479

IGI LABORATORY GROWN DIAMOND ID REPORT

June 11, 2022

IGI Report Number **LG532244479**

OVAL BRILLIANT

6.36 X 4.52 X 2.88 MM

Carat Weight 0.52 CARAT

Color Grade FANCY INTENSE

Clarity Grade VS 2

Polish EXCELLENT

Symmetry VERY GOOD

Fluorescence SLIGHT

Inscription(s) LABGROWN IGI

LG532244479

Comments: This Laboratory Grown Diamond was created by Chemical Vapor Deposition (CVD) growth process.

Indications of post-growth treatment.

LABORATORY GROWN DIAMOND REPORT

IGI LABORATORY GROWN DIAMOND IDENTIFICATION REPORT

June 11, 2022

IGI Report Number LG532244479

Description LABORATORY GROWN DIAMOND

Shape and Cutting Style OVAL BRILLIANT

Measurements 6.36 X 4.52 X 2.88 MM

GRADING RESULTS

Carat Weight 0.52 CARAT

Color Grade FANCY INTENSE PINK

Clarity Grade VS 2

ADDITIONAL GRADING INFORMATION

Polish EXCELLENT

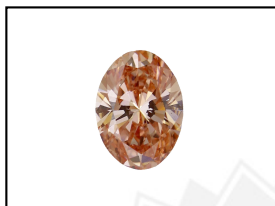
Symmetry VERY GOOD

Fluorescence SLIGHT

Inscription(s) LABGROWN IGI LG532244479

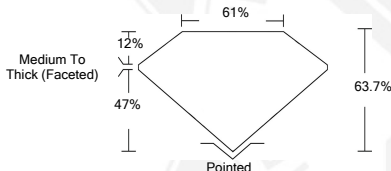
Comments: This Laboratory Grown Diamond was created by Chemical Vapor Deposition (CVD) growth process.

Indications of post-growth treatment.



LASERSCRIBESM

Sample Images Used



IGI LABORATORY GROWN DIAMOND ID REPORT

June 11, 2022

IGI Report Number **LG532244479**

OVAL BRILLIANT

6.36 X 4.52 X 2.88 MM

Carat Weight 0.52 CARAT

Color Grade FANCY INTENSE

Clarity Grade VS 2

Polish EXCELLENT

Symmetry VERY GOOD

Fluorescence SLIGHT

Inscription(s) LABGROWN IGI

LG532244479

Comments: This Laboratory Grown Diamond was created by Chemical Vapor Deposition (CVD) growth process.

Indications of post-growth treatment.



THIS DOCUMENT WAS PRODUCED WITH THE FOLLOWING SECURITY MEASURES: SPECIAL DOCUMENT PAPER, INK SCREENS, WATERMARK, BACKGROUND DESIGN, HOLOGRAM AND OTHER SECURITY FEATURES NOT LISTED AND DO EXCEED DOCUMENT SECURITY INDUSTRY GUIDELINES.

For terms & conditions and to verify this report, please visit www.igi.org