



# INTERNATIONAL GEMOLOGICAL INSTITUTE

ELECTRONIC COPY

## LABORATORY GROWN DIAMOND REPORT

LG532244472

### IGI LABORATORY GROWN DIAMOND ID REPORT

June 11, 2022

IGI Report Number **LG532244472**

#### OVAL BRILLIANT

**6.87 X 4.73 X 3.05 MM**

Carat Weight	0.65 CARAT
Color Grade	FANCY VIVID ORANGY PINK
Clarity Grade	VS 2
Polish	EXCELLENT
Symmetry	EXCELLENT
Fluorescence	SLIGHT
Inscription(s)	LABGROWN IGI LG532244472

Comments: This Laboratory Grown Diamond was created by Chemical Vapor Deposition (CVD) growth process.  
Indications of post-growth treatment.

## LABORATORY GROWN DIAMOND REPORT

### IGI LABORATORY GROWN DIAMOND IDENTIFICATION REPORT

June 11, 2022

IGI Report Number **LG532244472**

Description **LABORATORY GROWN DIAMOND**

Shape and Cutting Style **OVAL BRILLIANT**

Measurements **6.87 X 4.73 X 3.05 MM**

### GRADING RESULTS

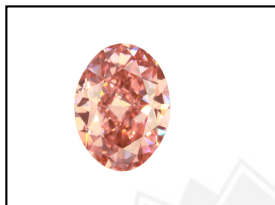
Carat Weight	0.65 CARAT
Color Grade	FANCY VIVID ORANGY PINK
Clarity Grade	VS 2

### ADDITIONAL GRADING INFORMATION

Polish	EXCELLENT
Symmetry	EXCELLENT
Fluorescence	SLIGHT
Inscription(s)	LABGROWN IGI LG532244472

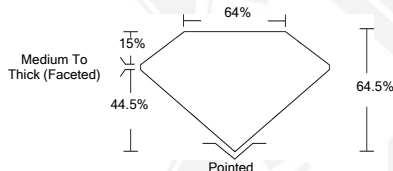
Comments: This Laboratory Grown Diamond was created by Chemical Vapor Deposition (CVD) growth process.

Indications of post-growth treatment.



LABGROWN IGI LG532244472

LASERSCRIBE<sup>SM</sup>  
Sample Images Used



### IGI LABORATORY GROWN DIAMOND ID REPORT

June 11, 2022

IGI Report Number **LG532244472**

#### OVAL BRILLIANT

**6.87 X 4.73 X 3.05 MM**

Carat Weight	0.65 CARAT
Color Grade	FANCY VIVID ORANGY PINK
Clarity Grade	VS 2
Polish	EXCELLENT
Symmetry	EXCELLENT
Fluorescence	SLIGHT
Inscription(s)	LABGROWN IGI LG532244472

Comments: This Laboratory Grown Diamond was created by Chemical Vapor Deposition (CVD) growth process.  
Indications of post-growth treatment.



THIS DOCUMENT WAS PRODUCED WITH THE FOLLOWING SECURITY MEASURES: SPECIAL DOCUMENT PAPER, INK SCREENS, WATERMARK, BACKGROUND DESIGN, HOLOGRAM AND OTHER SECURITY FEATURES NOT LISTED AND DO EXCEED DOCUMENT SECURITY INDUSTRY GUIDELINES.

For terms & conditions and to verify this report, please visit [www.igi.org](http://www.igi.org)