



**INTERNATIONAL
GEMOLOGICAL
INSTITUTE**

LABORATORY GROWN DIAMOND REPORT

IGI LABORATORY GROWN DIAMOND IDENTIFICATION REPORT

June 11, 2022
IGI Report Number LG532243372
Description LABORATORY GROWN DIAMOND
Shape and Cutting Style PEAR BRILLIANT
Measurements 7.12 X 4.58 X 2.56 MM

GRADING RESULTS

Carat Weight 0.50 CARAT
Color Grade FANCY INTENSE ORANGY PINK
Clarity Grade SI 1

ADDITIONAL GRADING INFORMATION

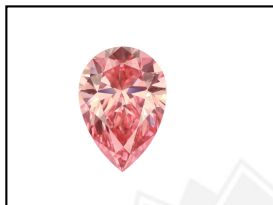
Polish VERY GOOD
Symmetry GOOD
Fluorescence SLIGHT
Inscription(s) LABGROWN IGI LG532243372

Comments: This Laboratory Grown Diamond was created by Chemical Vapor Deposition (CVD) growth process.
Indications of post-growth treatment.

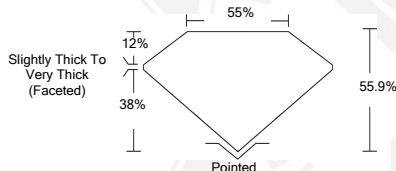
ELECTRONIC COPY

**LABORATORY GROWN
DIAMOND REPORT**

LG532243372



LASERSCRIBESM
Sample Images Used



**IGI LABORATORY GROWN
DIAMOND ID REPORT**

June 11, 2022
IGI Report Number **LG532243372**
PEAR BRILLIANT
7.12 X 4.58 X 2.56 MM
Carat Weight 0.50 CARAT
Color Grade FANCY INTENSE ORANGY PINK
Clarity Grade SI 1
Polish VERY GOOD
Symmetry GOOD
Fluorescence SLIGHT
Inscription(s) LABGROWN IGI LG532243372

Comments: This Laboratory Grown Diamond was created by Chemical Vapor Deposition (CVD) growth process.
Indications of post-growth treatment.

**IGI LABORATORY GROWN
DIAMOND ID REPORT**

June 11, 2022
IGI Report Number **LG532243372**
PEAR BRILLIANT
7.12 X 4.58 X 2.56 MM
Carat Weight 0.50 CARAT
Color Grade FANCY INTENSE ORANGY PINK
Clarity Grade SI 1
Polish VERY GOOD
Symmetry GOOD
Fluorescence SLIGHT
Inscription(s) LABGROWN IGI LG532243372

Comments: This Laboratory Grown Diamond was created by Chemical Vapor Deposition (CVD) growth process.
Indications of post-growth treatment.

THIS DOCUMENT WAS PRODUCED WITH THE FOLLOWING SECURITY MEASURES: SPECIAL DOCUMENT PAPER, INK SCREENS, WATERMARK, BACKGROUND DESIGN, HOLOGRAM AND OTHER SECURITY FEATURES NOT LISTED AND DO EXCEED DOCUMENT SECURITY INDUSTRY GUIDELINES.

For terms & conditions and to verify this report, please visit www.igi.org