



**INTERNATIONAL
GEMOLOGICAL
INSTITUTE**

LABORATORY GROWN DIAMOND REPORT

IGI LABORATORY GROWN DIAMOND IDENTIFICATION REPORT

June 7, 2022
 IGI Report Number LG532242485
 Description LABORATORY GROWN DIAMOND
 Shape and Cutting Style PEAR BRILLIANT
 Measurements 8.64 X 5.51 X 3.50 MM

GRADING RESULTS

Carat Weight 0.95 CARAT
 Color Grade FANCY VIVID PINK
 Clarity Grade VS 1

ADDITIONAL GRADING INFORMATION

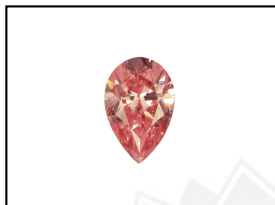
Polish EXCELLENT
 Symmetry EXCELLENT
 Fluorescence SLIGHT
 Inscription(s) LABGROWN IGI LG532242485

Comments: This Laboratory Grown Diamond was created by Chemical Vapor Deposition (CVD) growth process.
 Indications of post-growth treatment.

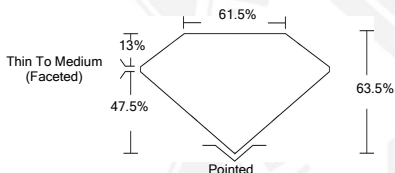
ELECTRONIC COPY

**LABORATORY GROWN
DIAMOND REPORT**

LG532242485



LASERSCRIBESM
Sample Images Used



**IGI LABORATORY GROWN
DIAMOND ID REPORT**

June 7, 2022
 IGI Report Number **LG532242485**
PEAR BRILLIANT
8.64 X 5.51 X 3.50 MM
 Carat Weight 0.95 CARAT
 Color Grade FANCY VIVID PINK
 Clarity Grade VS 1
 Polish EXCELLENT
 Symmetry EXCELLENT
 Fluorescence SLIGHT
 Inscription(s) LABGROWN IGI
 LG532242485

Comments: This Laboratory Grown Diamond was created by Chemical Vapor Deposition (CVD) growth process.
 Indications of post-growth treatment.

**IGI LABORATORY GROWN
DIAMOND ID REPORT**

June 7, 2022
 IGI Report Number **LG532242485**
PEAR BRILLIANT
8.64 X 5.51 X 3.50 MM
 Carat Weight 0.95 CARAT
 Color Grade FANCY VIVID PINK
 Clarity Grade VS 1
 Polish EXCELLENT
 Symmetry EXCELLENT
 Fluorescence SLIGHT
 Inscription(s) LABGROWN IGI
 LG532242485

Comments: This Laboratory Grown Diamond was created by Chemical Vapor Deposition (CVD) growth process.
 Indications of post-growth treatment.

THIS DOCUMENT WAS PRODUCED WITH THE FOLLOWING SECURITY MEASURES: SPECIAL DOCUMENT PAPER, INK SCREENS, WATERMARK, BACKGROUND DESIGN, HOLOGRAM AND OTHER SECURITY FEATURES NOT LISTED AND DO EXCEED DOCUMENT SECURITY INDUSTRY GUIDELINES.

For terms & conditions and to verify this report, please visit www.igi.org