



**INTERNATIONAL  
GEMOLOGICAL  
INSTITUTE**

**ELECTRONIC COPY**

**LABORATORY GROWN  
DIAMOND REPORT**

**IGI LABORATORY GROWN  
DIAMOND ID REPORT**

**LABORATORY GROWN DIAMOND REPORT**

**IGI LABORATORY GROWN DIAMOND IDENTIFICATION REPORT**

June 8, 2022  
IGI Report Number **LG532242457**  
Description **LABORATORY GROWN DIAMOND**  
Shape and Cutting Style **PEAR BRILLIANT**  
Measurements **6.65 X 4.40 X 2.83 MM**

**GRADING RESULTS**

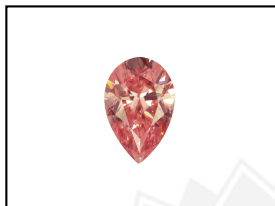
Carat Weight **0.50 CARAT**  
Color Grade **FANCY INTENSE PINK**  
Clarity Grade **SI 1**

**ADDITIONAL GRADING INFORMATION**

Polish **EXCELLENT**  
Symmetry **VERY GOOD**  
Fluorescence **SLIGHT**  
Inscription(s) **LABGROWN IGI LG532242457**

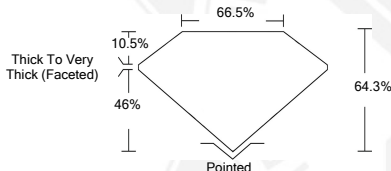
Comments: This Laboratory Grown Diamond was created by Chemical Vapor Deposition (CVD) growth process.  
Indications of post-growth treatment.

**LG532242457**



**LABGROWN IGI LG532242457**

**LASERSCRIBE<sup>SM</sup>**  
Sample Images Used



June 8, 2022  
IGI Report Number **LG532242457**  
**PEAR BRILLIANT**  
**6.65 X 4.40 X 2.83 MM**  
Carat Weight **0.50 CARAT**  
Color Grade **FANCY INTENSE PINK**  
Clarity Grade **SI 1**  
Polish **EXCELLENT**  
Symmetry **VERY GOOD**  
Fluorescence **SLIGHT**  
Inscription(s) **LABGROWN IGI LG532242457**

Comments: This Laboratory Grown Diamond was created by Chemical Vapor Deposition (CVD) growth process.  
Indications of post-growth treatment.

**IGI LABORATORY GROWN  
DIAMOND ID REPORT**

June 8, 2022  
IGI Report Number **LG532242457**  
**PEAR BRILLIANT**  
**6.65 X 4.40 X 2.83 MM**  
Carat Weight **0.50 CARAT**  
Color Grade **FANCY INTENSE PINK**  
Clarity Grade **SI 1**  
Polish **EXCELLENT**  
Symmetry **VERY GOOD**  
Fluorescence **SLIGHT**  
Inscription(s) **LABGROWN IGI LG532242457**

Comments: This Laboratory Grown Diamond was created by Chemical Vapor Deposition (CVD) growth process.  
Indications of post-growth treatment.

THIS DOCUMENT WAS PRODUCED WITH THE FOLLOWING SECURITY MEASURES: SPECIAL DOCUMENT PAPER, INK SCREENS, WATERMARK, BACKGROUND DESIGN, HOLOGRAM AND OTHER SECURITY FEATURES NOT LISTED AND DO EXCEED DOCUMENT SECURITY INDUSTRY GUIDELINES.

For terms & conditions and to verify this report, please visit [www.igi.org](http://www.igi.org)