

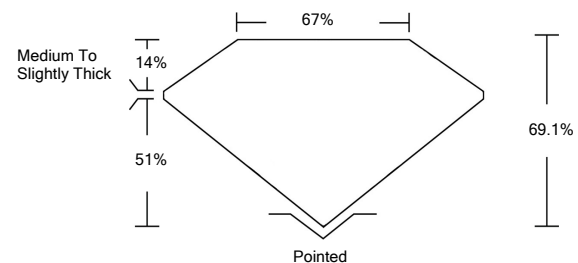


ELECTRONIC COPY

LABORATORY GROWN DIAMOND REPORT

LG532240060

PROPORTIONS



GRADING SCALES

| | | | | | | |
|-----------------------------|------------------------------|-----------------------------|------------------------|-------------------|-----------|---|
| COLOR GRADING SCALE | CL | NC | FT | VLT | LT | |
| | COLORLESS D-F | NEAR COLORLESS G-J | FAINT K-M | VERY LIGHT N-R | LIGHT S-Z | |
| CLARITY (10x) GRADING SCALE | FL | IF | VVS | VS | SI | I |
| | FLAWLESS INTERNALLY FLAWLESS | VERY VERY SLIGHTLY INCLUDED | VERY SLIGHTLY INCLUDED | SLIGHTLY INCLUDED | INCLUDED | |

June 4, 2022

IGI Report Number

LG532240060

Description

**LABORATORY GROWN
DIAMOND**

Shape and Cutting Style

**CUT CORNERED
RECTANGULAR MODIFIED
BRILLIANT**

Measurements

7.98 X 5.93 X 4.10 MM

GRADING RESULTS

Carat Weight

1.76 CARAT

Color Grade

G

Clarity Grade

VS 1

June 4, 2022

IGI Report Number

LG532240060

Description

**LABORATORY GROWN
DIAMOND**

Shape and Cutting Style

**CUT CORNERED
RECTANGULAR MODIFIED
BRILLIANT**

Measurements

7.98 X 5.93 X 4.10 MM

GRADING RESULTS

Carat Weight

1.76 CARAT

Color Grade

G

Clarity Grade

VS 1

ADDITIONAL GRADING INFORMATION

Polish

EXCELLENT

Symmetry

EXCELLENT

Fluorescence

NONE

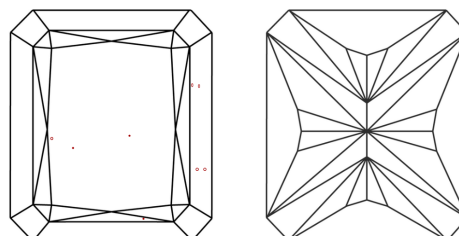
Inscription(s)

LABGROWN IGI LG532240060

Comments: This Laboratory Grown Diamond was created by Chemical Vapor Deposition (CVD) growth process and may include post-growth treatment.

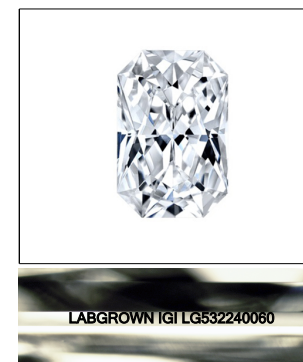
Type IIa

CLARITY CHARACTERISTICS



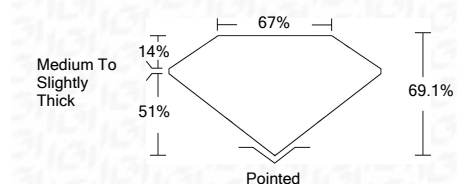
KEY TO SYMBOLS

Red symbols indicate internal characteristics.
Green symbols indicate external characteristics.



LASERSCRIBESM

Sample Image Used



ADDITIONAL GRADING INFORMATION

Polish

EXCELLENT

Symmetry

EXCELLENT

Fluorescence

NONE

Inscription(s)

LABGROWN IGI LG532240060

Comments: This Laboratory Grown Diamond was created by Chemical Vapor Deposition (CVD) growth process and may include post-growth treatment.
Type IIa



IGI

| | | | | | | | | | | | | | | | |
|--------------|----------------------------|---------------------------------------|-----------------------|------------|---|------|-----|-----|--------------------------|---------|-----------|-----------|------|--------------------------|--|
| June 4, 2022 | IGI Report No. LG532240060 | CUT CORNERED RECT. MODIFIED BRILLIANT | 7.98 X 5.93 X 4.10 MM | 1.76 CARAT | G | VS 1 | 67% | 67% | Medium To Slightly Thick | Pointed | EXCELLENT | EXCELLENT | NONE | LABGROWN IGI LG532240060 | Comments: |
| | | | | | | | | | | | | | | | This Laboratory Grown Diamond was created by Chemical Vapor Deposition (CVD) growth process and may include post-growth treatment. Type IIa |