



ELECTRONIC COPY

LABORATORY GROWN DIAMOND REPORT

June 4, 2022
IGI Report Number LG532240019
Description LABORATORY GROWN DIAMOND
Shape and Cutting Style CUT CORNERED RECTANGULAR MODIFIED BRILLIANT
Measurements 8.46 X 6.31 X 4.39 MM

GRADING RESULTS

Carat Weight 2.08 CARATS
Color Grade H
Clarity Grade VVS 2

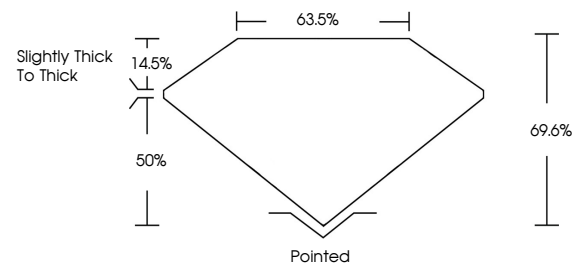
ADDITIONAL GRADING INFORMATION

Polish EXCELLENT
Symmetry EXCELLENT
Fluorescence NONE
Inscription(s) LABGROWN IGI LG532240019

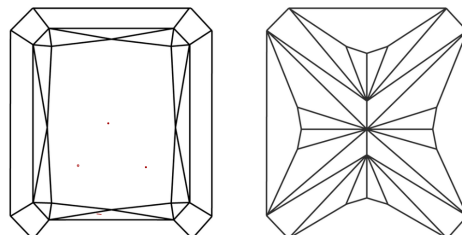
Comments: This Laboratory Grown Diamond was created by Chemical Vapor Deposition (CVD) growth process and may include post-growth treatment. Type IIa

LG532240019

PROPORTIONS



CLARITY CHARACTERISTICS

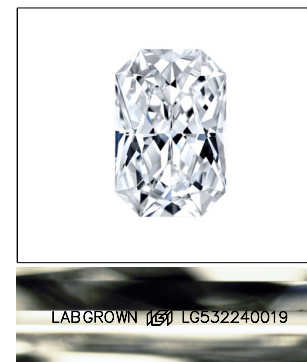


KEY TO SYMBOLS

Red symbols indicate internal characteristics.
Green symbols indicate external characteristics.

GRADING SCALES

Table with 2 rows and 5 columns showing color and clarity grading scales. Color scale: CL (Colorless D-F), NC (Near Colorless G-J), FT (Faint K-M), VLT (Very Light N-R), LT (Light S-Z). Clarity scale: FL (Flawless Internally Flawless), IF (Internally Flawless), VVS (Very Very Slightly Included), VS (Very Slightly Included), SI (Slightly Included), I (Included).

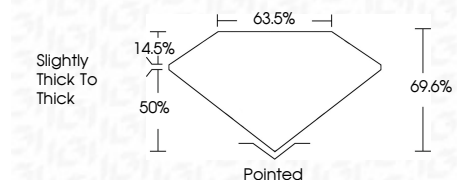


LASERSCRIBE SM
Sample Image Used

June 4, 2022
IGI Report Number LG532240019
Description LABORATORY GROWN DIAMOND
Shape and Cutting Style CUT CORNERED RECTANGULAR MODIFIED BRILLIANT
Measurements 8.46 X 6.31 X 4.39 MM

GRADING RESULTS

Carat Weight 2.08 CARATS
Color Grade H
Clarity Grade VVS 2



ADDITIONAL GRADING INFORMATION

Polish EXCELLENT
Symmetry EXCELLENT
Fluorescence NONE
Inscription(s) LABGROWN IGI LG532240019

Comments: This Laboratory Grown Diamond was created by Chemical Vapor Deposition (CVD) growth process and may include post-growth treatment. Type IIa



Summary box containing report details: Date (June 4, 2022), Report No (IGI532240019), Description (CUT CORNERED RECT. MODIFIED), Measurements (8.46 X 6.31 X 4.39 MM), Carat Weight (2.08 CARATS), Color Grade (H), Clarity Grade (VVS 2), Depth (69.6%), Table (50%), Girdle (Slightly Thick to Thick), Culet (Pointed), Polish (EXCELLENT), Symmetry (EXCELLENT), Fluorescence (NONE), Inscription(s) (LABGROWN IGI LG532240019), and Comments (Laboratory Grown Diamond was created by Chemical Vapor Deposition (CVD) growth process and may include post-growth treatment. Type IIa).