



**INTERNATIONAL  
GEMOLOGICAL  
INSTITUTE**

**LABORATORY GROWN DIAMOND REPORT**

**IGI LABORATORY GROWN DIAMOND IDENTIFICATION REPORT**

June 3, 2022  
 IGI Report Number LG532237849  
 Description LABORATORY GROWN DIAMOND  
 Shape and Cutting Style PEAR BRILLIANT  
 Measurements 6.95 X 4.22 X 2.50 MM

**GRADING RESULTS**

Carat Weight 0.44 CARAT  
 Color Grade G  
 Clarity Grade VS 1

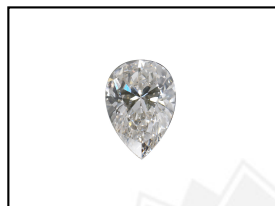
**ADDITIONAL GRADING INFORMATION**

Polish VERY GOOD  
 Symmetry VERY GOOD  
 Fluorescence NONE  
 Inscription(s) LABGROWN IGI LG532237849

Comments: This Laboratory Grown Diamond was created by Chemical Vapor Deposition (CVD) growth process and may include post-growth treatment. Type IIa

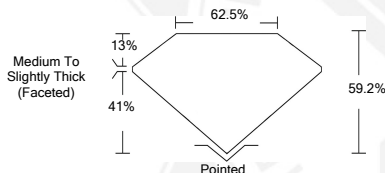
**ELECTRONIC COPY LABORATORY GROWN  
DIAMOND REPORT**

**LG532237849**



**LABGROWN IGI LG532237849**

**LASERSCRIBE<sup>SM</sup>**  
Sample Images Used



**IGI LABORATORY GROWN  
DIAMOND ID REPORT**

June 3, 2022  
 IGI Report Number **LG532237849**  
**PEAR BRILLIANT**  
**6.95 X 4.22 X 2.50 MM**  
 Carat Weight 0.44 CARAT  
 Color Grade G  
 Clarity Grade VS 1  
 Polish VERY GOOD  
 Symmetry VERY GOOD  
 Fluorescence NONE  
 Inscription(s) LABGROWN IGI  
 LG532237849

Comments: This Laboratory Grown Diamond was created by Chemical Vapor Deposition (CVD) growth process and may include post-growth treatment. Type IIa

**IGI LABORATORY GROWN  
DIAMOND ID REPORT**

June 3, 2022  
 IGI Report Number **LG532237849**  
**PEAR BRILLIANT**  
**6.95 X 4.22 X 2.50 MM**  
 Carat Weight 0.44 CARAT  
 Color Grade G  
 Clarity Grade VS 1  
 Polish VERY GOOD  
 Symmetry VERY GOOD  
 Fluorescence NONE  
 Inscription(s) LABGROWN IGI  
 LG532237849

Comments: This Laboratory Grown Diamond was created by Chemical Vapor Deposition (CVD) growth process and may include post-growth treatment. Type IIa

THIS DOCUMENT WAS PRODUCED WITH THE FOLLOWING SECURITY MEASURES: SPECIAL DOCUMENT PAPER, INK SCREENS, WATERMARK, BACKGROUND DESIGN, HOLOGRAM AND OTHER SECURITY FEATURES NOT LISTED AND DO EXCEED DOCUMENT SECURITY INDUSTRY GUIDELINES.

For terms & conditions and to verify this report, please visit [www.igi.org](http://www.igi.org)