



**INTERNATIONAL  
GEMOLOGICAL  
INSTITUTE**

**ELECTRONIC COPY LABORATORY GROWN  
DIAMOND REPORT**

**IGI LABORATORY GROWN  
DIAMOND ID REPORT**

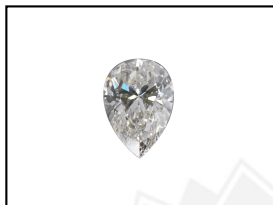
**LABORATORY GROWN DIAMOND REPORT**

**LG532237782**

June 3, 2022  
IGI Report Number **LG532237782**  
**PEAR BRILLIANT**  
**6.35 X 3.91 X 2.29 MM**  
Carat Weight 0.33 CARAT  
Color Grade G  
Clarity Grade VVS 2  
Polish VERY GOOD  
Symmetry VERY GOOD  
Fluorescence NONE  
Inscription(s) LABGROWN IGI  
LG532237782

**IGI LABORATORY GROWN DIAMOND IDENTIFICATION REPORT**

June 3, 2022  
IGI Report Number LG532237782  
Description LABORATORY GROWN DIAMOND  
Shape and Cutting Style PEAR BRILLIANT  
Measurements 6.35 X 3.91 X 2.29 MM



Comments: This Laboratory Grown Diamond was created by Chemical Vapor Deposition (CVD) growth process and may include post-growth treatment.  
Type IIa

**GRADING RESULTS**

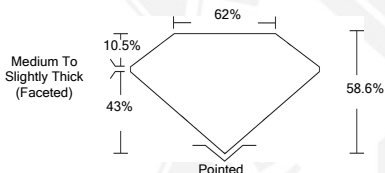
Carat Weight 0.33 CARAT  
Color Grade G  
Clarity Grade VVS 2

**ADDITIONAL GRADING INFORMATION**

Polish VERY GOOD  
Symmetry VERY GOOD  
Fluorescence NONE  
Inscription(s) LABGROWN IGI LG532237782

Comments: This Laboratory Grown Diamond was created by Chemical Vapor Deposition (CVD) growth process and may include post-growth treatment.  
Type IIa

**LASERSCRIBE<sup>SM</sup>**  
Sample Images Used



**IGI LABORATORY GROWN  
DIAMOND ID REPORT**

June 3, 2022  
IGI Report Number **LG532237782**  
**PEAR BRILLIANT**  
**6.35 X 3.91 X 2.29 MM**  
Carat Weight 0.33 CARAT  
Color Grade G  
Clarity Grade VVS 2  
Polish VERY GOOD  
Symmetry VERY GOOD  
Fluorescence NONE  
Inscription(s) LABGROWN IGI  
LG532237782

Comments: This Laboratory Grown Diamond was created by Chemical Vapor Deposition (CVD) growth process and may include post-growth treatment.  
Type IIa

THIS DOCUMENT WAS PRODUCED WITH THE FOLLOWING SECURITY MEASURES: SPECIAL DOCUMENT PAPER, INK SCREENS, WATERMARK, BACKGROUND DESIGN, HOLOGRAM AND OTHER SECURITY FEATURES NOT LISTED AND DO EXCEED DOCUMENT SECURITY INDUSTRY GUIDELINES.

For terms & conditions and to verify this report, please visit [www.igi.org](http://www.igi.org)