



**INTERNATIONAL
GEMOLOGICAL
INSTITUTE**

LABORATORY GROWN DIAMOND REPORT

IGI LABORATORY GROWN DIAMOND IDENTIFICATION REPORT

June 3, 2022
 IGI Report Number **LG532237766**
 Description **LABORATORY GROWN DIAMOND**
 Shape and Cutting Style **PEAR BRILLIANT**
 Measurements **6.68 X 4.26 X 2.68 MM**

GRADING RESULTS

Carat Weight **0.44 CARAT**
 Color Grade **G**
 Clarity Grade **VS 1**

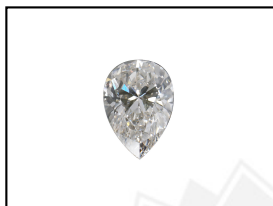
ADDITIONAL GRADING INFORMATION

Polish **EXCELLENT**
 Symmetry **VERY GOOD**
 Fluorescence **NONE**
 Inscription(s) **LABGROWN IGI LG532237766**

Comments: This Laboratory Grown Diamond was created by Chemical Vapor Deposition (CVD) growth process and may include post-growth treatment.
 Type IIa

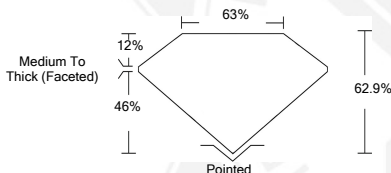
**ELECTRONIC COPY LABORATORY GROWN
DIAMOND REPORT**

LG532237766



LABGROWN IGI LG532237766

LASERSCRIBESM
Sample Images Used



**IGI LABORATORY GROWN
DIAMOND ID REPORT**

June 3, 2022
 IGI Report Number **LG532237766**
PEAR BRILLIANT
6.68 X 4.26 X 2.68 MM
 Carat Weight **0.44 CARAT**
 Color Grade **G**
 Clarity Grade **VS 1**
 Polish **EXCELLENT**
 Symmetry **VERY GOOD**
 Fluorescence **NONE**
 Inscription(s) **LABGROWN IGI
LG532237766**

Comments: This Laboratory Grown Diamond was created by Chemical Vapor Deposition (CVD) growth process and may include post-growth treatment.
 Type IIa

**IGI LABORATORY GROWN
DIAMOND ID REPORT**

June 3, 2022
 IGI Report Number **LG532237766**
PEAR BRILLIANT
6.68 X 4.26 X 2.68 MM
 Carat Weight **0.44 CARAT**
 Color Grade **G**
 Clarity Grade **VS 1**
 Polish **EXCELLENT**
 Symmetry **VERY GOOD**
 Fluorescence **NONE**
 Inscription(s) **LABGROWN IGI
LG532237766**

Comments: This Laboratory Grown Diamond was created by Chemical Vapor Deposition (CVD) growth process and may include post-growth treatment.
 Type IIa

THIS DOCUMENT WAS PRODUCED WITH THE FOLLOWING SECURITY MEASURES: SPECIAL DOCUMENT PAPER, INK SCREENS, WATERMARK, BACKGROUND DESIGN, HOLOGRAM AND OTHER SECURITY FEATURES NOT LISTED AND DO EXCEED DOCUMENT SECURITY INDUSTRY GUIDELINES.

For terms & conditions and to verify this report, please visit www.igi.org