



**ELECTRONIC COPY**

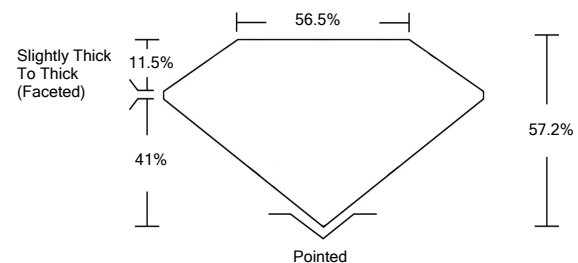
LG532236412

**LABORATORY GROWN DIAMOND REPORT**

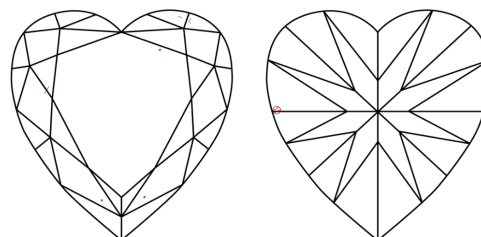
**GRADING SCALES**

COLOR GRADING SCALE	CL	NC	FT	VL	LT	
	COLORLESS D-F	NEAR COLORLESS G-J	FAINT K-M	VERY LIGHT N-R	LIGHT S-Z	
CLARITY (10x) GRADING SCALE	FL	IF	VVS	VS	SI	I
	FLAWLESS INTERNALLY FLAWLESS	VERY VERY SLIGHTLY INCLUDED	VERY SLIGHTLY INCLUDED	SLIGHTLY INCLUDED	INCLUDED	

**PROPORTIONS**

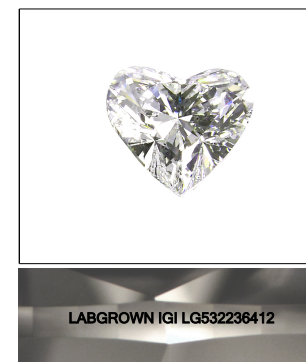


**CLARITY CHARACTERISTICS**



**KEY TO SYMBOLS**

Red symbols indicate internal characteristics.  
Green symbols indicate external characteristics.



**LASERSCRIBE<sup>SM</sup>**

Sample Image Used

June 1, 2022

IGI Report Number

**LG532236412**

Description

**LABORATORY GROWN  
DIAMOND**

Shape and Cutting Style

**HEART BRILLIANT**

Measurements

**8.28 X 8.97 X 5.13 MM**

**GRADING RESULTS**

Carat Weight

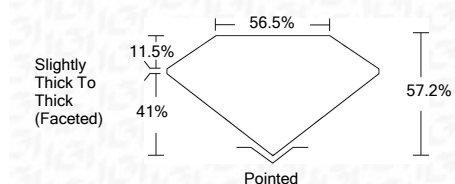
**2.20 CARATS**

Color Grade

**G**

Clarity Grade

**VS 1**



**ADDITIONAL GRADING INFORMATION**

Polish

**EXCELLENT**

Symmetry

**EXCELLENT**

Fluorescence

**NONE**

Inscription(s)

**LABGROWN IGI LG532236412**

Comments: This Laboratory Grown Diamond was created by Chemical Vapor Deposition (CVD) growth process and may include post-growth treatment.

Type IIa

June 1, 2022

IGI Report Number

**LG532236412**

Description

**LABORATORY GROWN  
DIAMOND**

Shape and Cutting Style

**HEART BRILLIANT**

Measurements

**8.28 X 8.97 X 5.13 MM**

**GRADING RESULTS**

Carat Weight

**2.20 CARATS**

Color Grade

**G**

Clarity Grade

**VS 1**

**ADDITIONAL GRADING INFORMATION**

Polish

**EXCELLENT**

Symmetry

**EXCELLENT**

Fluorescence

**NONE**

Inscription(s)

**LABGROWN IGI LG532236412**

Comments: This Laboratory Grown Diamond was created by Chemical Vapor Deposition (CVD) growth process and may include post-growth treatment.

Type IIa



**IGI**

IGI Report No. LG532236412	HEART BRILLIANT	8.28 X 8.97 X 5.13 MM	2.20 CARATS	G	VS 1	57.2%	56.5%	Slightly Thick To Thick (Faceted)	Pointed	EXCELLENT	EXCELLENT	NONE	LABGROWN IGI LG532236412
June 1, 2022													

This Laboratory Grown Diamond was created by Chemical Vapor Deposition (CVD) growth process and may include post-growth treatment.  
Type IIa