



ELECTRONIC COPY

LABORATORY GROWN DIAMOND REPORT

| | |
|-------------------------|-----------------------------|
| May 25, 2022 | |
| IGI Report Number | LG530298334 |
| Description | LABORATORY GROWN DIAMOND |
| Shape and Cutting Style | ROUND BRILLIANT |
| Measurements | 9.09 - 9.14 X 5.67 MM |

GRADING RESULTS

| | |
|---------------|-------------|
| Carat Weight | 2.89 CARATS |
| Color Grade | I |
| Clarity Grade | VVS 2 |
| Cut Grade | IDEAL |

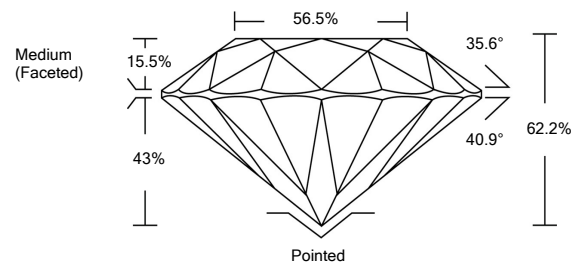
ADDITIONAL GRADING INFORMATION

| | |
|----------------|--------------------------|
| Polish | EXCELLENT |
| Symmetry | EXCELLENT |
| Fluorescence | NONE |
| Inscription(s) | LABGROWN IGI LG530298334 |

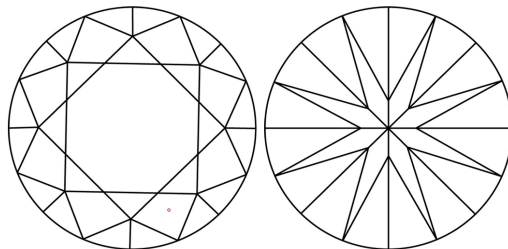
Comments: This Laboratory Grown Diamond was created by Chemical Vapor Deposition (CVD) growth process and may include post-growth treatment.
Type IIa

LG530298334

PROPORTIONS



CLARITY CHARACTERISTICS

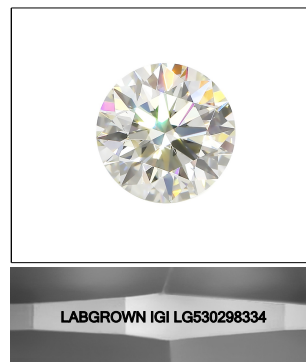


KEY TO SYMBOLS

Red symbols indicate internal characteristics.
Green symbols indicate external characteristics.

GRADING SCALES

| | | | | | | |
|-----------------------------|------------------------------|----|-----------------------------|------------------------|-------------------|-----------|
| COLOR GRADING SCALE | CL | | NC | FT | VLT | LT |
| | COLORLESS D-F | | NEAR COLORLESS G-J | FAINT K-M | VERY LIGHT N-R | LIGHT S-Z |
| CLARITY (10x) GRADING SCALE | FL | IF | VVS | VS | SI | I |
| | FLAWLESS INTERNALLY FLAWLESS | | VERY VERY SLIGHTLY INCLUDED | VERY SLIGHTLY INCLUDED | SLIGHTLY INCLUDED | INCLUDED |

LASERSCRIBESM

Sample Image Used



© IGI 2020, International Gemological Institute

FD - 10 20

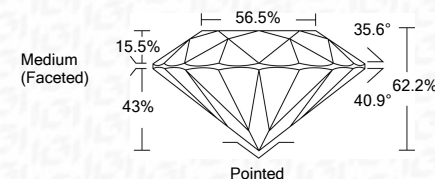
www.igi.org

LABORATORY GROWN DIAMOND REPORT

| | |
|-------------------------|-----------------------------|
| May 25, 2022 | |
| IGI Report Number | LG530298334 |
| Description | LABORATORY GROWN DIAMOND |
| Shape and Cutting Style | ROUND BRILLIANT |
| Measurements | 9.08 - 9.14 X 5.67 MM |

GRADING RESULTS

| | |
|---------------|-------------|
| Carat Weight | 2.89 CARATS |
| Color Grade | I |
| Clarity Grade | VVS 2 |
| Cut Grade | IDEAL |



ADDITIONAL GRADING INFORMATION

| | |
|----------------|--------------------------|
| Polish | EXCELLENT |
| Symmetry | EXCELLENT |
| Fluorescence | NONE |
| Inscription(s) | LABGROWN IGI LG530298334 |

Inscription(s) **LABGROWN IGI LG530298334**

Comments: This Laboratory Grown Diamond was created by Chemical Vapor Deposition (CVD) growth process and may include post-growth treatment.
Type IIa



IG

| | | | | | | | | | | |
|--------------|--------------------------|----------------|-------------|---|-----------------|-----------------|-----------|------|-------------------------|---|
| May 25, 2022 | IGI Report No LGS0298334 | ROUND BRILLANT | 2.88 CARATS | I | VVS 2 | Pointed | Excellent | None | LARGESON (GI LGS0298334 | <p>Comments:</p> <p>This Laboratory Group Diamond was created by Chemical Vapor Deposition (CVD) growth process and may include post-growth treatment.</p> <p>Type IIa</p> |
| | 0.09 - 0.14 X 5.67 MM | Color Grade | | | IDEAL | Excellent | Excellent | | | |
| | Carat Weight | | | | 62.2% | Symmetry | Excellent | | | |
| | | | | | 58.5% | Fluorescence | None | | | |
| | | | | | Medium (Feared) | Inscriptions(s) | | | | |