



**ELECTRONIC COPY**

## LABORATORY GROWN DIAMOND REPORT

May 24, 2022

IGI Report Number **LG530297638**

Description	LABORATORY GROWN DIAMOND
-------------	-----------------------------

Shape and Cutting Style **ROUND BRILLIANT**

Measurements **8.30 - 8.34 X 5.05 MM**

## GRADING RESULTS

Carat Weight **2.14 CARATS**

Color Grade **E**Clarity Grade **VS 2**

Cut Grade	IDEAL
-----------	-------

### ADDITIONAL GRADING INFORMATION

Polish **EXCELLENT**

Symmetry **EXCELLENT**

Fluorescence **NONE**

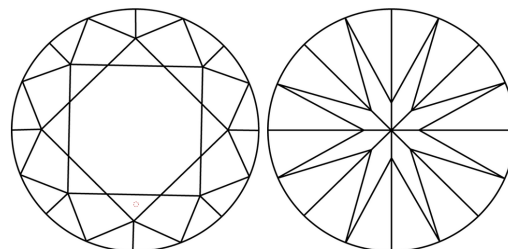
Inscription(s) **LABGROWN IGI LG530297638**

Comments: HEARTS & ARROWS  
As Grown - No indication of post-growth treatment.  
This Laboratory Grown Diamond was created by High Pressure High Temperature (HPHT) growth process.  
Type II

Diagram illustrating the proportions of a faceted diamond. The proportions are defined as follows:

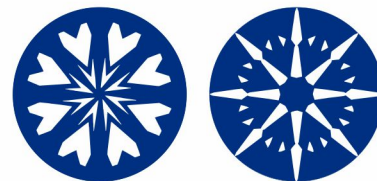
- Table width: 57%
- Table angle: 34.3°
- Pavilion angle: 40.6°
- Total depth: 60.7%
- Crown height: 42.5%
- Crown width: 14.5%

## CLARITY CHARACTERISTICS



## KEY TO SYMBOLS

Red symbols indicate internal characteristics.  
Green symbols indicate external characteristics.

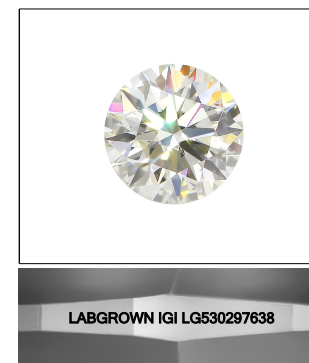


**www.igi.org**

LABORATORY GROWN  
DIAMOND REPORT

## GRADING SCALES

COLOR GRADING SCALE	CL		NC		FT		VLT		LT	
	COLORLESS D-F		NEAR COLORLESS G-J		FAINT K-M		VERY LIGHT N-R		LIGHT S-Z	
CLARITY (10x) GRADING SCALE	FL	IF	VVS		VS		SI		I	
	FLAWLESS INTERNALLY FLAWLESS		VERY VERY SLIGHTLY INCLUDED		VERY SLIGHTLY INCLUDED		SLIGHTLY INCLUDED		INCLUDED	

LASERSCRIBE<sup>SM</sup>

Sample Image Used



© IGI 2020, International Gemological Institute

FD - 10 20



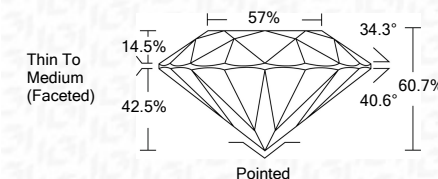
THIS DOCUMENT WAS PRODUCED WITH THE FOLLOWING SECURITY MEASURES: SPECIAL DOCUMENT PAPER, INK SCREENS, WATERMARK, BACKGROUND DESIGNS, HOLOGRAM AND OTHER SECURITY FEATURES NOT LISTED AND DO EXCEED DOCUMENT SECURITY INDUSTRY GUIDELINE

## LABORATORY GROWN DIAMOND REPORT

May 24, 2022	
IGI Report Number	LG530297638
Description	LABORATORY GROWN DIAMOND
Shape and Cutting Style	ROUND BRILLIANT
Measurements	8.30 - 8.34 X 5.05 MM

## GRADING RESULTS

Carat Weight	2.14 CARATS
Color Grade	E
Clarity Grade	VVS 2
Cut Grade	IDEAL



### ADDITIONAL GRADING INFORMATION

Polish	EXCELLENT
Symmetry	EXCELLENT
Fluorescence	NONE
Inscription(s)	LABGROWN IGI LG530297638

Comments: HEARTS & ARROWS  
As Grown - No indication of post-growth treatment.  
This Laboratory Grown Diamond was created by High  
Pressure High Temperature (HPHT) growth process.  
Type II



May 24, 2022	
IGI Report No. LG530297638	
ROUND BRILLIANT	
2.14 CARATS	
WVS 2	
IDEAL	
60.7%	
57%	
Thin To Medium	
(Faceted)	
Pointed	
EXCELLENT	
SYMMETRY	
EXCELLENT	
NONE	
LAB-GROWN (IGI)	
LG530297638	
Comments:	
HEARTS & ARROWS	
As Graded - No indication of post-growth treatment.	
This Laboratory Grown Diamond was created by High Pressure High Temperature (HPHT)	