



ELECTRONIC COPY

LG530294018 Report verification at igi.org



July 5, 2025 IGI Report Number LG530294018 Description LABORATORY GROWN DIAMOND Shape and Cutting Style ROUND BRILLIANT Measurements 8.09 - 8.13 X 4.96 MM GRADING RESULTS Carat Weight 2.01 CARATS Color Grade FANCY INTENSE PINK Clarity Grade VS 1 Cut Grade IDEAL

July 5, 2025 IGI Report Number LG530294018 Description LABORATORY GROWN DIAMOND Shape and Cutting Style ROUND BRILLIANT Measurements 8.09 - 8.13 X 4.96 MM

GRADING RESULTS

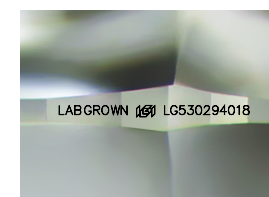
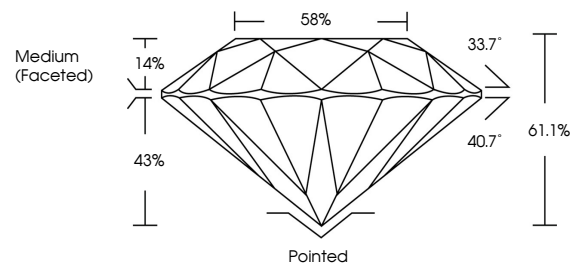
Carat Weight 2.01 CARATS Color Grade FANCY INTENSE PINK Clarity Grade VS 1 Cut Grade IDEAL

ADDITIONAL GRADING INFORMATION

Polish EXCELLENT Symmetry EXCELLENT Fluorescence SLIGHT Inscription(s) LABGROWN (IGI) LG530294018

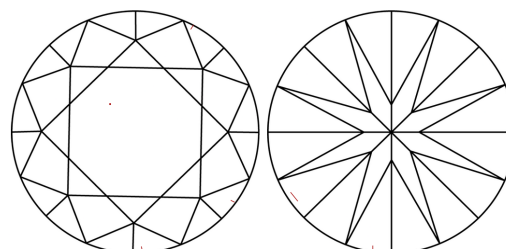
Comments: This Laboratory Grown Diamond was created by Chemical Vapor Deposition (CVD) growth process. Indications of post-growth treatment.

PROPORTIONS



Sample Image Used

CLARITY CHARACTERISTICS



KEY TO SYMBOLS

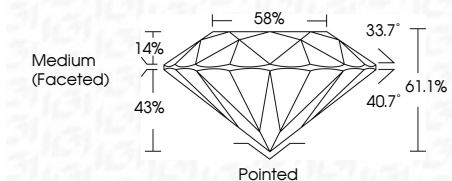
Red symbols indicate internal characteristics. Green symbols indicate external characteristics.

COLOR

D E F G H I J Faint Very Light Light

CLARITY

IF VS 1-2 VS 1-2 SI 1-2 I 1-3 Internally Flawless Very Very Slightly Included Very Slightly Included Slightly Included Included



ADDITIONAL GRADING INFORMATION

Polish EXCELLENT Symmetry EXCELLENT Fluorescence SLIGHT Inscription(s) LABGROWN (IGI) LG530294018 Comments: This Laboratory Grown Diamond was created by Chemical Vapor Deposition (CVD) growth process. Indications of post-growth treatment.



Summary of report details including date, report number, description, measurements, grading results, and additional information.