



ELECTRONIC COPY

LABORATORY GROWN DIAMOND REPORT

May 15, 2024
IGI Report Number LG530293411
Description LABORATORY GROWN DIAMOND
Shape and Cutting Style CUSHION BRILLIANT
Measurements 7.35 X 6.81 X 4.35 MM

GRADING RESULTS

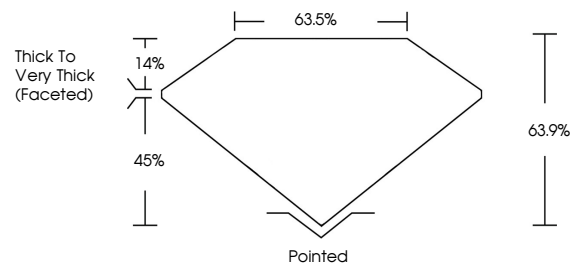
Carat Weight 2.01 CARATS
Color Grade FANCY VIVID PINK
Clarity Grade SI 1

ADDITIONAL GRADING INFORMATION

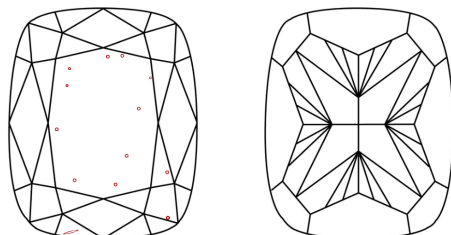
Polish EXCELLENT
Symmetry EXCELLENT
Fluorescence SLIGHT
Inscription(s) LABGROWN (IGI) LG530293411

Comments: This Laboratory Grown Diamond was created by Chemical Vapor Deposition (CVD) growth process.
Indications of post-growth treatment.

PROPORTIONS

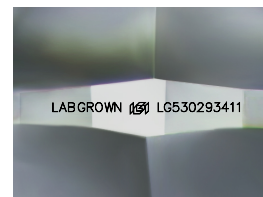


CLARITY CHARACTERISTICS



KEY TO SYMBOLS

Red symbols indicate internal characteristics.
Green symbols indicate external characteristics.



Sample Image Used

COLOR

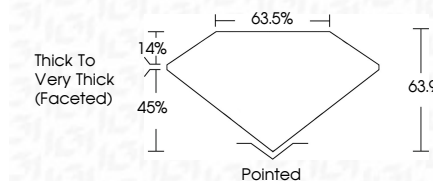
D	E	F	G	H	I	J	Faint	Very Light	Light
---	---	---	---	---	---	---	-------	------------	-------

CLARITY

IF	VS ¹⁻²	VS ¹⁻²	SI ¹⁻²	I ¹⁻³
Internally Flawless	Very Very Slightly Included	Very Slightly Included	Slightly Included	Included



May 15, 2024
IGI Report Number LG530293411
Description LABORATORY GROWN DIAMOND
Shape and Cutting Style CUSHION BRILLIANT
Measurements 7.35 X 6.81 X 4.35 MM
GRADING RESULTS
Carat Weight 2.01 CARATS
Color Grade FANCY VIVID PINK
Clarity Grade SI 1



ADDITIONAL GRADING INFORMATION

Polish EXCELLENT
Symmetry EXCELLENT
Fluorescence SLIGHT
Inscription(s) LABGROWN (IGI) LG530293411
Comments: This Laboratory Grown Diamond was created by Chemical Vapor Deposition (CVD) growth process.
Indications of post-growth treatment.



IGI



May 15, 2024
IGI Report No LG530293411
CUSHION BRILLIANT
2.01 CARATS
FANCY VIVID PINK
SI 1
7.35 X 6.81 X 4.35 MM
Carat Weight
Color Grade
Clarity Grade
Depth 63.9%
Table 63.5%
Girdle
Thick to Very Thick (Faceted)
Culet Pointed
Polish EXCELLENT
Symmetry EXCELLENT
Fluorescence SLIGHT
Inscription(s) LABGROWN (IGI) LG530293411
Comments: This Laboratory Grown Diamond was created by Chemical Vapor Deposition (CVD) growth process.
Indications of post-growth treatment.