



ELECTRONIC COPY

LABORATORY GROWN DIAMOND REPORT

| | |
|-------------------------|-----------------------------|
| November 8, 2023 | |
| IGI Report Number | LG530293337 |
| Description | LABORATORY GROWN DIAMOND |
| Shape and Cutting Style | PRINCESS CUT |
| Measurements | 6.69 X 6.65 X 4.72 MM |

GRADING RESULTS

| | |
|---------------|------------|
| Carat Weight | 1.73 CARAT |
| Color Grade | F |
| Clarity Grade | VS 1 |

ADDITIONAL GRADING INFORMATION

| | |
|----------------|---------------------------|
| Polish | EXCELLENT |
| Symmetry | EXCELLENT |
| Fluorescence | NONE |
| Inscription(s) | LABGROWN 1151 LG530293337 |

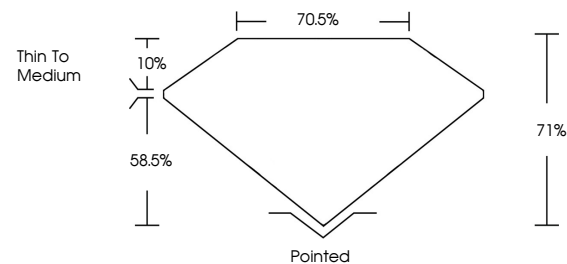
Comments: This Laboratory Grown Diamond was created by Chemical Vapor Deposition (CVD) growth process and may include post-growth treatment.
Type IIa

LABORATORY GROWN DIAMOND REPORT

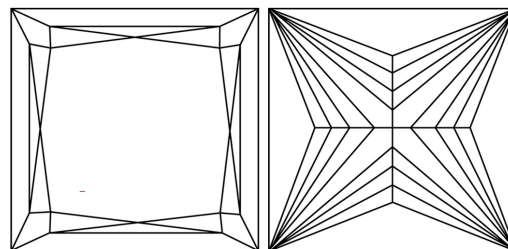
LG530293337

Report verification at igi.org

PROPORTIONS



CLARITY CHARACTERISTICS



KEY TO SYMBOLS

Red symbols indicate internal characteristics.
Green symbols indicate external characteristics.

LABORATORY GROWN
DIAMOND REPORT

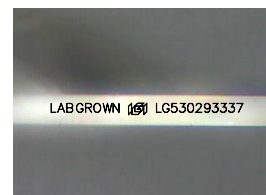
GRADING SCALES

CLARITY

| IF | VVS ¹⁻² | VS ¹⁻² | SI ¹⁻² | I ¹⁻³ |
|---------------------|-----------------------------|------------------------|-------------------|------------------|
| Internally Flawless | Very Very Slightly Included | Very Slightly Included | Slightly Included | Included |

COLOR

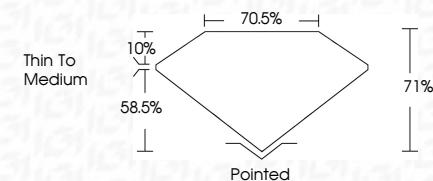
D E F G H I J Faint Very Light Light



Sample Image Used



| | |
|-------------------------|-----------------------------|
| November 8, 2023 | |
| IGI Report Number | LG530293337 |
| Description | LABORATORY GROWN DIAMOND |
| Shape and Cutting Style | PRINCESS CUT |
| Measurements | 6.69 X 6.65 X 4.72 MM |
| GRADING RESULTS | |
| Carat Weight | 1.73 CARAT |
| Color Grade | F |
| Clarity Grade | VS 1 |



ADDITIONAL GRADING INFORMATION

| | |
|----------------|---------------------------|
| Polish | EXCELLENT |
| Symmetry | EXCELLENT |
| Fluorescence | NONE |
| Inscription(s) | LABGROWN (15) LG530293337 |

Comments: This Laboratory Grown Diamond was created by Chemical Vapor Deposition (CVD) growth process and may include post-growth treatment.
Type IIa



© IGI 2020, International Gemological Institute

FD - 10 20

www.igi.org

November 8, 2023
GI Report No LG530293337
PRINCESS CUT

| | |
|-----------------|----------------|
| Carat Weight | 1.75 CARAT |
| Color Grade | F |
| Clarity Grade | VS 1 |
| Depth | 71% |
| Table | 70.5% |
| Grade | Thin To Medium |
| Culet | Pointed |
| Polish | EXCELLENT |
| Symmetry | EXCELLENT |
| Fluorescence | NONE |
| Inscriptions(s) | LABGROWN 68 |

Comments:
This Laboratory Grown Diamond was created by Chemical Vapor Deposition (CVD) growth process and may include post-growth treatment.