



**ELECTRONIC COPY**

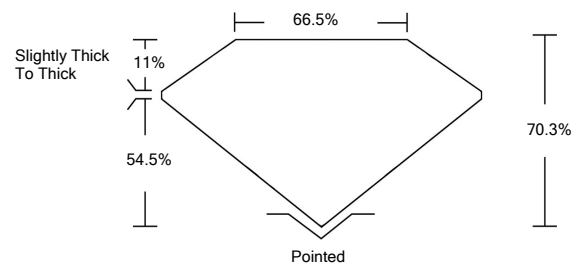
**LABORATORY GROWN DIAMOND REPORT**

LG530293291

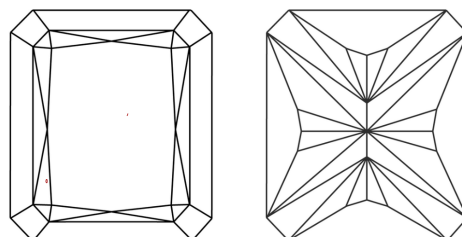
**GRADING SCALES**

COLOR GRADING SCALE	CL	NC	FT	VLT	LT	
	COLORLESS D-F	NEAR COLORLESS G-J	FAINT K-M	VERY LIGHT N-R	LIGHT S-Z	
CLARITY (10x) GRADING SCALE	FL	IF	VVS	VS	SI	I
	FLAWLESS INTERNALLY FLAWLESS	VERY VERY SLIGHTLY INCLUDED	VERY SLIGHTLY INCLUDED	SLIGHTLY INCLUDED	INCLUDED	

**PROPORTIONS**

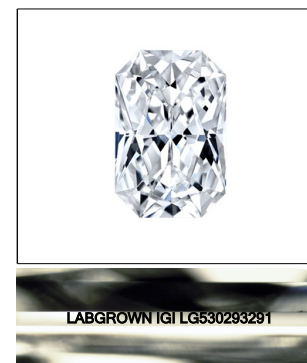


**CLARITY CHARACTERISTICS**



**KEY TO SYMBOLS**

Red symbols indicate internal characteristics.  
Green symbols indicate external characteristics.



LASERSCRIBE<sup>SM</sup>

Sample Image Used

May 23, 2022

IGI Report Number

**LG530293291**

Description

**LABORATORY GROWN  
DIAMOND**

Shape and Cutting Style

**CUT CORNERED  
RECTANGULAR MODIFIED  
BRILLIANT**

Measurements

**7.80 X 5.58 X 3.92 MM**

**GRADING RESULTS**

Carat Weight

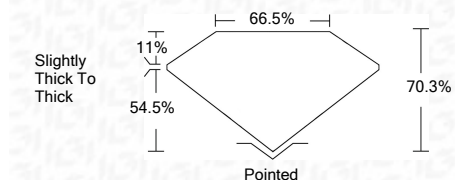
**1.57 CARAT**

Color Grade

**F**

Clarity Grade

**VS 1**



**ADDITIONAL GRADING INFORMATION**

Polish

**EXCELLENT**

Symmetry

**EXCELLENT**

Fluorescence

**NONE**

Inscription(s)

**LABGROWN IGI LG530293291**

Comments: This Laboratory Grown Diamond was created by Chemical Vapor Deposition (CVD) growth process and may include post-growth treatment.  
Type IIa



**IGI**



IGI Report No. LG530293291	CUT CORNERED RECT. MODIFIED BRILLIANT	7.80 X 5.58 X 3.92 MM	1.57 CARAT	F	VS 1	70.3%	66.5%	Slightly Thick To Thick	Pointed	EXCELLENT	EXCELLENT	NONE	LABGROWN IGI LG530293291	Comments:
May 23, 2022														This Laboratory Grown Diamond was created by Chemical Vapor Deposition (CVD) growth process and may include post-growth treatment. Type IIa