



ELECTRONIC COPY

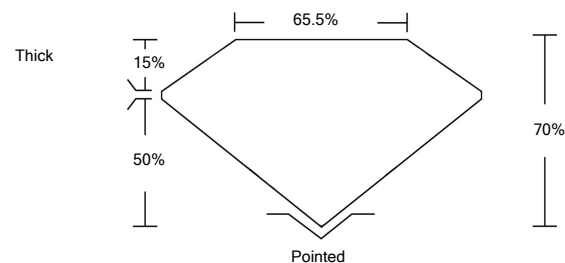
LABORATORY GROWN DIAMOND REPORT

LG530293268

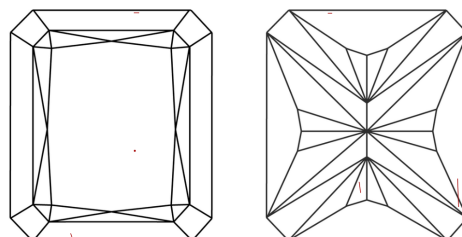
GRADING SCALES

COLOR GRADING SCALE	CL	NC	FT	VL	LT	
	COLORLESS D-F	NEAR COLORLESS G-J	FAINT K-M	VERY LIGHT N-R	LIGHT S-Z	
CLARITY (10x) GRADING SCALE	FL	IF	VVS	VS	SI	I
	FLAWLESS INTERNALLY FLAWLESS	VERY VERY SLIGHTLY INCLUDED	VERY SLIGHTLY INCLUDED	SLIGHTLY INCLUDED	INCLUDED	

PROPORTIONS

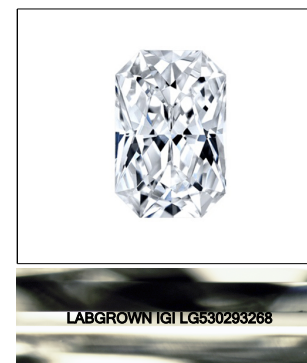


CLARITY CHARACTERISTICS



KEY TO SYMBOLS

Red symbols indicate internal characteristics. Green symbols indicate external characteristics.

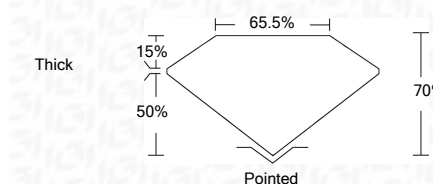


LASERSCRIBESM Sample Image Used

May 23, 2022
 IGI Report Number **LG530293268**
 Description **LABORATORY GROWN DIAMOND**
 Shape and Cutting Style **CUT CORNERED RECTANGULAR MODIFIED BRILLIANT**
 Measurements **8.62 X 6.36 X 4.45 MM**

GRADING RESULTS

Carat Weight **2.30 CARATS**
 Color Grade **G**
 Clarity Grade **VS 2**



ADDITIONAL GRADING INFORMATION

Polish **EXCELLENT**
 Symmetry **EXCELLENT**
 Fluorescence **NONE**

Inscription(s) **LABGROWN IGI LG530293268**

Comments: This Laboratory Grown Diamond was created by Chemical Vapor Deposition (CVD) growth process and may include post-growth treatment. Type IIa



IGI Report No. LG530293268	CUT CORNERED RECT. MODIFIED BRILLIANT	8.62 X 6.36 X 4.45 MM	2.30 CARATS	G	VS 2	70%	65.5%	Thick	Pointed	EXCELLENT	EXCELLENT	NONE	LABGROWN IGI LG530293268
May 23, 2022													

This Laboratory Grown Diamond was created by Chemical Vapor Deposition (CVD) growth process and may include post-growth treatment. Type IIa