

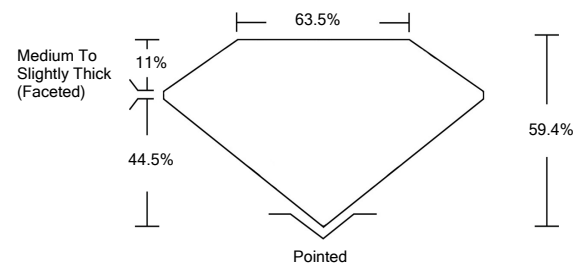


ELECTRONIC COPY

LABORATORY GROWN DIAMOND REPORT

LG530293145

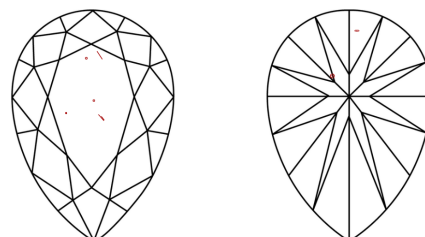
PROPORTIONS



GRADING SCALES

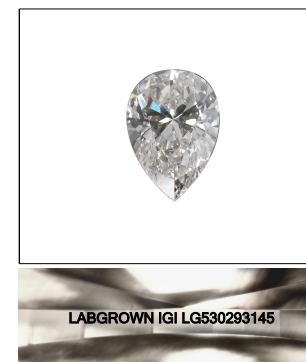
COLOR GRADING SCALE	CL	NC	FT	VLT	LT	
	COLORLESS D-F	NEAR COLORLESS G-J	FAINT K-M	VERY LIGHT N-R	LIGHT S-Z	
CLARITY (10x) GRADING SCALE	FL	IF	VVS	VS	SI	I
	FLAWLESS INTERNALLY FLAWLESS	VERY VERY SLIGHTLY INCLUDED	VERY SLIGHTLY INCLUDED	SLIGHTLY INCLUDED	INCLUDED	

CLARITY CHARACTERISTICS



KEY TO SYMBOLS

Red symbols indicate internal characteristics.
Green symbols indicate external characteristics.



LASERSCRIBESM
Sample Image Used

May 22, 2022

IGI Report Number **LG530293145**

Description **LABORATORY GROWN DIAMOND**

Shape and Cutting Style **PEAR BRILLIANT**

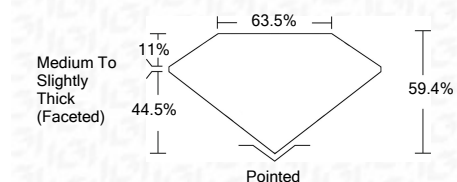
Measurements **11.32 X 7.25 X 4.31 MM**

GRADING RESULTS

Carat Weight **2.03 CARATS**

Color Grade **G**

Clarity Grade **VS 2**



ADDITIONAL GRADING INFORMATION

Polish **EXCELLENT**

Symmetry **EXCELLENT**

Fluorescence **NONE**

Inscription(s) **LABGROWN IGI LG530293145**

Comments: This Laboratory Grown Diamond was created by Chemical Vapor Deposition (CVD) growth process and may include post-growth treatment.
Type IIa

May 22, 2022

IGI Report Number **LG530293145**

Description **LABORATORY GROWN DIAMOND**

Shape and Cutting Style **PEAR BRILLIANT**

Measurements **11.32 X 7.25 X 4.31 MM**

GRADING RESULTS

Carat Weight **2.03 CARATS**

Color Grade **G**

Clarity Grade **VS 2**

ADDITIONAL GRADING INFORMATION

Polish **EXCELLENT**

Symmetry **EXCELLENT**

Fluorescence **NONE**

Inscription(s) **LABGROWN IGI LG530293145**

Comments: This Laboratory Grown Diamond was created by Chemical Vapor Deposition (CVD) growth process and may include post-growth treatment.
Type IIa



IGI

IGI Report No. LG530293145	2.03 CARATS	G	VS 2	63.5%	59.4%	11%	44.5%	Pointed	EXCELLENT	EXCELLENT	NONE	LABGROWN IGI LG530293145
PEAR BRILLIANT	11.32 X 7.25 X 4.31 MM	Color Grade	Clarity Grade	Depth	Table	Girdle	Medium To Slightly Thick (Faceted)	Culet	Polish	Symmetry	Fluorescence	Inscription(s)

Comments: This Laboratory Grown Diamond was created by Chemical Vapor Deposition (CVD) growth process and may include post-growth treatment.
Type IIa