



ELECTRONIC COPY

LABORATORY GROWN DIAMOND REPORT

June 6, 2022
IGI Report Number LG530291622
Description LABORATORY GROWN DIAMOND
Shape and Cutting Style ROUND BRILLIANT
Measurements 7.84 - 7.89 X 4.71 MM

GRADING RESULTS

Carat Weight 1.80 CARAT
Color Grade FANCY VIVID PINK
Clarity Grade VS 2
Cut Grade IDEAL

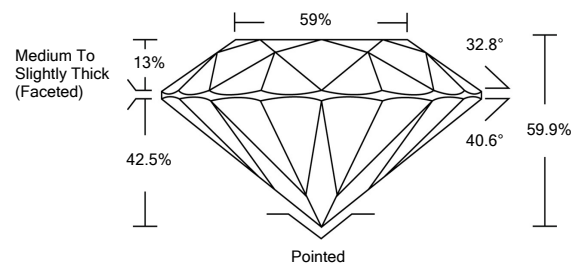
ADDITIONAL GRADING INFORMATION

Polish EXCELLENT
Symmetry EXCELLENT
Fluorescence SLIGHT
Inscription(s) LABGROWN IGI LG530291622

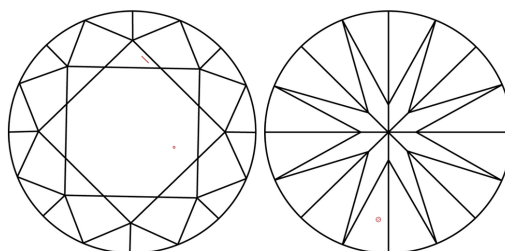
Comments: This Laboratory Grown Diamond was created by Chemical Vapor Deposition (CVD) growth process. Indications of post-growth treatment.

LG530291622

PROPORTIONS



CLARITY CHARACTERISTICS



KEY TO SYMBOLS

Red symbols indicate internal characteristics. Green symbols indicate external characteristics.

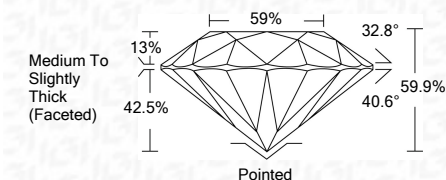
LABORATORY GROWN DIAMOND REPORT

GRADING SCALES

Table showing color grading scales (CL, NC, FT, VLT, LT) and clarity (10x) grading scales (FL, IF, VVS, VS, SI, I).

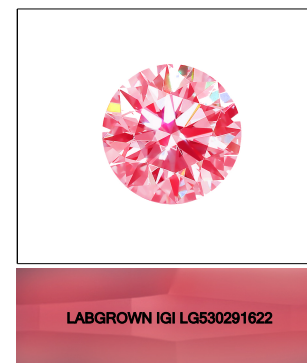
LABORATORY GROWN DIAMOND REPORT

June 6, 2022
IGI Report Number LG530291622
Description LABORATORY GROWN DIAMOND
Shape and Cutting Style ROUND BRILLIANT
Measurements 7.84 - 7.89 X 4.71 MM
GRADING RESULTS
Carat Weight 1.80 CARAT
Color Grade FANCY VIVID PINK
Clarity Grade VS 2
Cut Grade IDEAL



ADDITIONAL GRADING INFORMATION

Polish EXCELLENT
Symmetry EXCELLENT
Fluorescence SLIGHT
Inscription(s) LABGROWN IGI LG530291622
Comments: This Laboratory Grown Diamond was created by Chemical Vapor Deposition (CVD) growth process. Indications of post-growth treatment.



LASERSCRIBE SM Sample Image Used



IGI



June 6, 2022
IGI Report No. LG530291622
ROUND BRILLIANT
7.84 - 7.89 X 4.71 MM
Carat Weight 1.80 CARAT
Color Grade FANCY VIVID PINK
Clarity Grade VS 2
Cut Grade IDEAL
Depth 59.9%
Table 59%
Girdle Medium To Slightly Thick (Faceted)
Culet Pointed
Polish EXCELLENT
Symmetry EXCELLENT
Fluorescence SLIGHT
Inscriptions(s) LABGROWN IGI LG530291622
Comments: This Laboratory Grown Diamond was created by Chemical Vapor Deposition (CVD) growth process. Indications of post-growth treatment.