



ELECTRONIC COPY

LABORATORY GROWN DIAMOND REPORT

June 6, 2022
 IGI Report Number **LG530291598**
 Description **LABORATORY GROWN
DIAMOND**
 Shape and Cutting Style **ROUND BRILLIANT**
 Measurements **7.54 - 7.60 X 4.76 MM**

GRADING RESULTS

Carat Weight **1.71 CARAT**
 Color Grade **FANCY VIVID PINK**
 Clarity Grade **SI 1**
 Cut Grade **EXCELLENT**

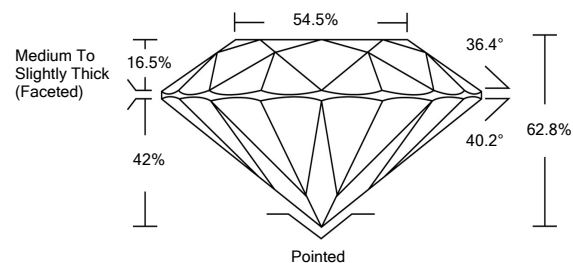
ADDITIONAL GRADING INFORMATION

Polish **EXCELLENT**
 Symmetry **EXCELLENT**
 Fluorescence **SLIGHT**
 Inscription(s) **LABGROWN IGI LG530291598**

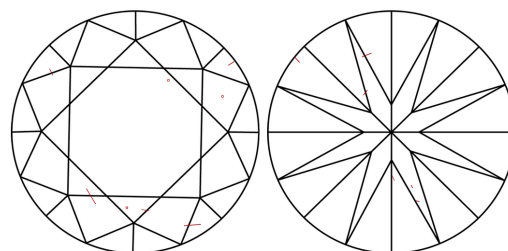
Comments: This Laboratory Grown Diamond was created by Chemical Vapor Deposition (CVD) growth process. Indications of post-growth treatment.

LG530291598

PROPORTIONS



CLARITY CHARACTERISTICS



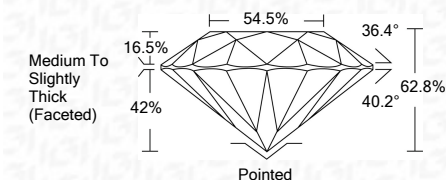
KEY TO SYMBOLS

Red symbols indicate internal characteristics.
 Green symbols indicate external characteristics.

GRADING SCALES

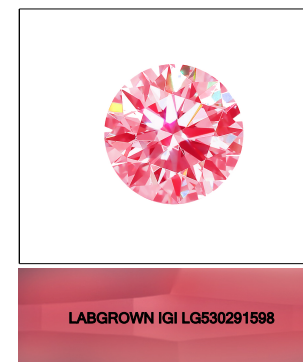
| COLOR GRADING SCALE | CL | NC | FT | VLT | LT | |
|-----------------------------|------------------------------|-----------------------------|------------------------|-------------------|-----------|---|
| | COLORLESS D-F | NEAR COLORLESS G-J | FAINT K-M | VERY LIGHT N-R | LIGHT S-Z | |
| CLARITY (10x) GRADING SCALE | FL | IF | VVS | VS | SI | I |
| | FLAWLESS INTERNALLY FLAWLESS | VERY VERY SLIGHTLY INCLUDED | VERY SLIGHTLY INCLUDED | SLIGHTLY INCLUDED | INCLUDED | |

June 6, 2022
 IGI Report Number **LG530291598**
 Description **LABORATORY GROWN
DIAMOND**
 Shape and Cutting Style **ROUND BRILLIANT**
 Measurements **7.54 - 7.60 X 4.76 MM**
GRADING RESULTS
 Carat Weight **1.71 CARAT**
 Color Grade **FANCY VIVID PINK**
 Clarity Grade **SI 1**
 Cut Grade **EXCELLENT**



ADDITIONAL GRADING INFORMATION

Polish **EXCELLENT**
 Symmetry **EXCELLENT**
 Fluorescence **SLIGHT**
 Inscription(s) **LABGROWN IGI LG530291598**
 Comments: This Laboratory Grown Diamond was created by Chemical Vapor Deposition (CVD) growth process. Indications of post-growth treatment.



LASERSCRIBESM

Sample Image Used



IGI

June 6, 2022
 IGI Report No. **LG530291598**
ROUND BRILLIANT
 Measurements **7.54 - 7.60 X 4.76 MM**
 Carat Weight **1.71 CARAT**
 Color Grade **FANCY VIVID PINK**
 Clarity Grade **SI 1**
 Depth **EXCELLENT**
 Table **62.8%**
 Girdle **54.5%**
 Girdle **Medium To Slightly Thick (Faceted)**
 Culet **Pointed**
 Polish **EXCELLENT**
 Symmetry **EXCELLENT**
 Fluorescence **SLIGHT**
 Inscription(s) **LABGROWN IGI LG530291598**
 Comments: This Laboratory Grown Diamond was created by Chemical Vapor Deposition (CVD) growth process. Indications of post-growth treatment.