



**ELECTRONIC COPY**

**LABORATORY GROWN DIAMOND REPORT**

July 29, 2022  
 IGI Report Number **LG530218558**  
 Description **LABORATORY GROWN  
DIAMOND**  
 Shape and Cutting Style **ROUND BRILLIANT**  
 Measurements **8.48 - 8.51 X 5.17 MM**

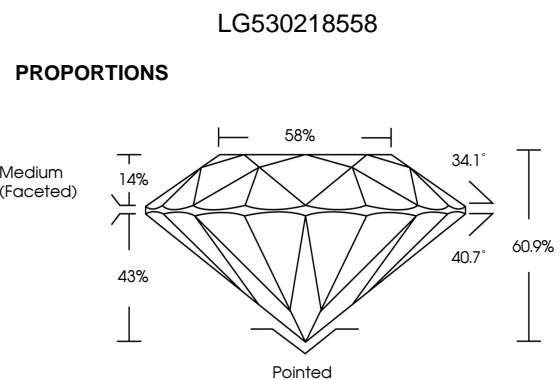
**GRADING RESULTS**

Carat Weight **2.31 CARATS**  
 Color Grade **F**  
 Clarity Grade **VS 1**  
 Cut Grade **IDEAL**

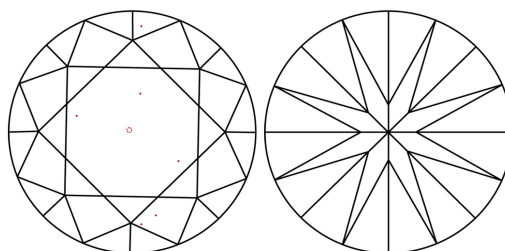
**ADDITIONAL GRADING INFORMATION**

Polish **EXCELLENT**  
 Symmetry **EXCELLENT**  
 Fluorescence **NONE**  
 Inscription(s) **LABGROWN IGI LG530218558**

Comments: HEARTS & ARROWS  
 This Laboratory Grown Diamond was created by  
 Chemical Vapor Deposition (CVD) growth process and  
 may include post-growth treatment.  
 Type IIa

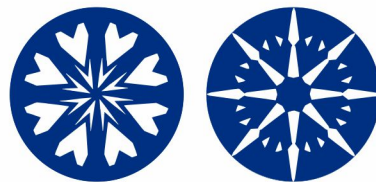


**CLARITY CHARACTERISTICS**



**KEY TO SYMBOLS**

Red symbols indicate internal characteristics.  
 Green symbols indicate external characteristics.

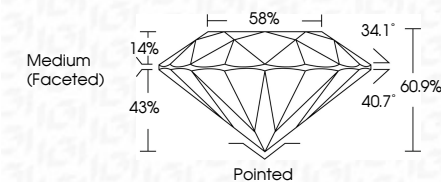


[www.igi.org](http://www.igi.org)

**GRADING SCALES**

| COLOR GRADING SCALE         | CL                           | NC                          | FT                     | VLT               | LT        |          |
|-----------------------------|------------------------------|-----------------------------|------------------------|-------------------|-----------|----------|
|                             | COLORLESS D-F                | NEAR COLORLESS G-J          | FAINT K-M              | VERY LIGHT N-R    | LIGHT S-Z |          |
| CLARITY (10x) GRADING SCALE | FL                           | IF                          | VVS                    | VS                | SI        | I        |
|                             | FLAWLESS INTERNALLY FLAWLESS | VERY VERY SLIGHTLY INCLUDED | VERY SLIGHTLY INCLUDED | SLIGHTLY INCLUDED |           | INCLUDED |

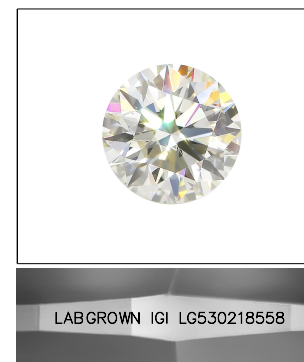
July 29, 2022  
 IGI Report Number **LG530218558**  
 Description **LABORATORY GROWN  
DIAMOND**  
 Shape and Cutting Style **ROUND BRILLIANT**  
 Measurements **8.48 - 8.51 X 5.17 MM**  
**GRADING RESULTS**  
 Carat Weight **2.31 CARATS**  
 Color Grade **F**  
 Clarity Grade **VS 1**  
 Cut Grade **IDEAL**



**ADDITIONAL GRADING INFORMATION**

Polish **EXCELLENT**  
 Symmetry **EXCELLENT**  
 Fluorescence **NONE**  
 Inscription(s) **LABGROWN IGI LG530218558**

Comments: HEARTS & ARROWS  
 This Laboratory Grown Diamond was created by  
 Chemical Vapor Deposition (CVD) growth process and  
 may include post-growth treatment.  
 Type IIa



**LASERSCRIBE<sup>SM</sup>**

Sample Image Used



|                           |                           |              |             |               |           |       |       |                  |         |           |           |              |                          |
|---------------------------|---------------------------|--------------|-------------|---------------|-----------|-------|-------|------------------|---------|-----------|-----------|--------------|--------------------------|
| July 29, 2022             | IGI Report No LG530218558 | 2.31 CARATS  | F           | VS 1          | IDEAL     | 60.9% | 58%   | Medium (Faceted) | Pointed | EXCELLENT | EXCELLENT | NONE         | LABGROWN IGI LG530218558 |
| IGI Report No LG530218558 | ROUND BRILLIANT           | Carat Weight | Color Grade | Clarity Grade | Cut Grade | Depth | Table | Grade            | Culet   | Polish    | Symmetry  | Fluorescence | Inscription(s)           |
| 8.48 - 8.51 X 5.17 MM     |                           |              |             |               |           |       |       |                  |         |           |           |              |                          |

Comments: HEARTS & ARROWS  
 This Laboratory Grown Diamond was created by Chemical Vapor Deposition (CVD) growth process and may include post-growth treatment.  
 Type IIa